



Republic of Zambia

The Monthly

Central Statistical Office

Volume 36

Website: www.zamstats.gov.zm

March, 2006

Serving Your Data Needs
Serving Your Data Needs

Foreword

Welcome to the Monthly presentation organised by Dissemination Branch. The Central Statistical Office (CSO) embarked on vigorous information delivery strategy to major stakeholders and the media institutions in order to increase utilisation of statistical products and services. The department produces a number of statistical products in the Economic, Social, Agricultural and Environmental areas. The information collected in these areas may be used for various purposes including policy formulation, planning, implementation, monitoring and evaluation of programmes and projects.

This Monthly publication, (which is produced on a monthly basis), is an attempt to provide highlights of CSO's work and how it can help media institutions and the general public to make use of data and information for sustainable national development and decision-making.

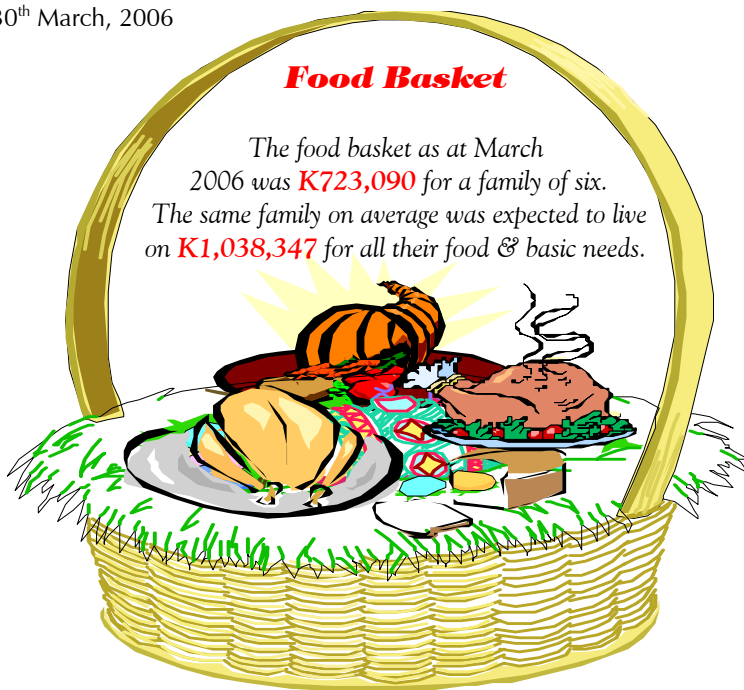
Finally, I would like to urge our readers and users of statistical information to send any comments that may enhance statistical production and contribute to the improvement of this publication to us.

Dr. Buleti G. Nsemukila
Director of Census and Statistics

30th March, 2006

Food Basket

The food basket as at March 2006 was **K723,090** for a family of six. The same family on average was expected to live on **K1,038,347** for all their food & basic needs.



Inside this Issue

- **March Inflation Increases**
 - **Imports Decline more than Exports in February, 2006!**
 - **Trading Dominates in the Non-Formal Sector**
 - **Malaria, Diarrhoea, TB – Claim more lives**
 - **Medical Doctors demand more user fees – reveals LCMSIV**
 - **International Women's Day – 8th March**
- Theme: "2006: Enhancement of Women in Decision Making for Sustainable Development" - Are we getting there?**
- **Layman & Statistics**

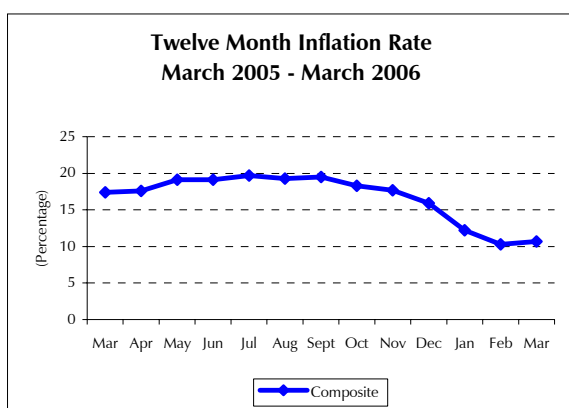
Feature Article

- **Sixty Seven percent of the population in Eastern Province is poor!**
- **Education, key to low levels of Poverty**
- **Ninety percent of the Population in Nyimba District live below the poverty line?**

March Inflation Increases

The annual rate of inflation, as measured by the all items Consumer Price Index (CPI), was recorded at 10.7 percent as at March 2006. This rate is 0.4 of a percentage point higher than the February rate of 10.3 percent. Compared with March 2005, the annual rate of inflation declined by 6.7 percentage points, from 17.4 percent in March 2005 to 10.7 percent in March 2006.

This means that prices as measured by the all items Consumer Price Index (CPI) increased by an average of 10.7 percent between March 2005 and March 2006.



Source: CSO, Consumer Price Index, March, 2006

Contributions of Different Items to Overall Inflation

The annual inflation rate for March 2006 is 0.4 of a percentage point higher than the February 2006 rate of 10.3 percent. This increase of 0.4 of a percentage point is accounted for by the rise in the cost of food products, rent and household energy, clothing and footwear.

Furthermore, of the total 10.7 percent annual inflation in March 2006, increases in food prices accounted for 5.8 percentage points while non-food items in the Consumer Price Index (CPI) accounted for 4.9 percentage points.

Items	Percentage Points Contributions of different items to overall inflation											
	Apr-05	May-05	Jun-05	Jul-05	Aug-05	Sep-05	Oct-05	Nov-05	Dec-05	Jan-06	Feb-06	Mar-06
Food Beverages and Tobacco	9.6	10.1	10.1	9.8	10.7	10.8	9.9	9.6	9.3	6.8	5.4	5.8
Clothing and Footwear	1.0	1.0	1.1	1.0	1.1	1.1	1.2	1.1	1.1	1.2	1.5	1.7
Rent and household energy	2.5	2.4	2.7	2.8	2.8	2.8	2.9	2.8	2.6	1.9	1.6	1.7
Furniture and Household Goods	2.0	1.9	1.9	2.0	1.8	2.0	2.0	1.8	1.8	1.8	1.3	1.2
Medical Care	0.1	0.1	0.1	0.1	0.1	0.1	0.1	0.1	0.1	0.1	0.1	0.1
Transport (fuel, airfares, new motor vehicles)	1.9	2.1	1.8	1.5	1.3	1.3	0.8	0.4	-0.3	-0.8	-0.9	-0.9
Recreation and Education	0.9	0.9	0.9	0.9	0.9	0.9	0.9	0.9	0.9	0.8	0.8	0.8
Other Goods and Services	0.6	0.6	0.6	0.6	0.6	0.5	0.5	0.5	0.4	0.4	0.4	0.3
All Items	18.6	19.1	19.2	18.7	19.3	19.5	18.3	17.2	15.9	12.2	10.3	10.7

Source: CSO, Consumer Price Index, March, 2006

Food Prices Increase

Annual food inflation was recorded at 10.9 percent, increasing by 0.7 of a percentage point on the February rate of 10.2 percent. Contributing most to this rise in inflation were increases in the cost of meat, dried kapenta, fish, dressed chicken, other cereals (millet and sorghum), tubers, shelled groundnuts, cooking oil, milk and milk products. However maize grain and mealie meal prices recorded marginal declines.

Annual non-food inflation rate stood at 10.4 percent, from 10.1 percent in February 2006. Contributing to this rise were increases in the cost of rent and household energy, clothing and footwear and household appliances.

Maize Grain Prices Decline

A comparison of prices between February and March 2006, shows that the national average price of 1kg of samp increased by 18.6 percent, from K3,253 to K3,858. The average price of 1kg of dried kapenta (Mpulungu) increased by 4.5 percent, while the average price of 1kg of Mixed cut (beef) increased by 4.6 percent. However, the average price of a 20 litre tin of maize grain declined by 3.2 percent.

National Average Prices (Kwacha) for Selected Products and Months

Product Description	2005			2006			Percentage Change(%) Mar06/ Feb06
	Oct	Nov	Dec	Jan	Feb	Mar	
White breakfast maize meal 25Kg	41,813	42,460	43,461	43,829	43,325	43,313	0.0
White Roller maize meal 25Kg	33,608	34,576	35,643	36,477	36,600	36,491	-0.3
Samp 1 Kg	3,492	3,415	3,309	3,360	3,253	3,858	18.6
White Maize 20 litre tin	17,610	19,060	20,698	21,106	23,184	22,433	-3.2
Rice Local 1 Kg	3,944	3,869	3,768	3,788	3,915	4,130	5.5
Millet 5 litre tin	5,322	5,776	6,162	6,427	6,493	7,234	11.4
Sorghum 5 litre tin	3,155	4,062	5,072	5,070	4,498	6,455	43.5
Fillet Steak 1 Kg	20,568	21,293	21,034	20,539	20,950	21,691	3.5
Brisket 1 Kg	13,968	13,641	13,528	13,574	13,975	14,386	2.9
Mince Meat 1 Kg	16,065	16,954	16,803	16,386	16,799	17,567	4.6
Mixed Cut 1 Kg	12,935	12,784	12,591	12,714	12,865	13,451	4.6
Ox-liver 1 Kg	16,318	16,601	16,190	15,950	16,600	17,843	7.5
Offals 1 Kg	8,552	8,756	8,405	8,210	8,104	8,304	2.5
Dressed chicken 1 Kg	13,444	13,562	12,999	13,519	13,542	13,723	1.3
Dried Kapenta Mpulungu 1 Kg	33,202	33,551	33,489	31,966	31,422	32,824	4.5
Dried Kapenta Siavonga 1 Kg	33,692	31,446	30,887	31,868	29,832	31,159	4.4
Cabbage 1kg	1,219	1,259	1,507	1,371	1,339	1,449	8.2
Onion 1kg	4,199	3,806	3,827	4,134	4,256	4,575	7.5
Tomatoes 1kg	2,439	2,635	2,763	2,712	2,372	2,423	2.2
Rape 1kg	1,458	1,724	2,128	2,114	1,903	1,799	-5.5
Shelled groundnut 1kg	5,261	5,697	6,484	6,524	6,388	6,886	7.8
Banana 1kg	2,658	3,024	2,990	3,038	2,892	3,887	34.4
Raw cassava tubers Unsoaked 1kg	1,236	1,384	1,390	2,062	1,907	1,979	3.8
Bed & continental B/fast 3 to 5 star Hotel	617,842	620,213	483,029	458,446	478,461	487,608	1.9
Takeaway Chicken & Chips	11,260	11,561	11,663	11,644	11,130	12,130	9.0

Source: CSO, Consumer Price Index, March, 2006

International Merchandize Trade

Imports Decline more than Exports in February 2006!

The month of February 2006 experienced decreases in the total values of imports and exports with respect to January 2006. Total imports notably declined from K733 billion in January 2006 to K603 billion in February 2006, representing a drop of 18 percent. The total value of exports also declined though marginally from K588 billion in January, 2006 to K578 billion in February 2006, equivalent to a 2 percent decline. The overall effect of these shifts led to a significant drop in the trade deficit of 83 percent, from K144 billion in January to K 25 billion in February 2006.

Total Exports, Imports & Trade Balance, January 2006 to February 2006*, (K' Millions)

Months	Imports (CIF)	Domestic Exports(fob)	Re-Exports (fob)	Total Exports (FOB)	Trade Balance
Jan-6	732,670	585,161	3,143	588,304	(144,366)
Feb-06*	602,712	576,232	1,774	578,006	(24,706)
Total:	1,335,382	1,161,393	4,917	1,166,310	(169,072)

Source: CSO, International Trade Statistics, 2006, Note: (*) Provisional

Domestic exports decreased from K585 billion in January to K576 billion in February of 2006. The share of Domestic exports in total exports was about 99 percent in both January and February 2006; with re-exports accounting for the respective remaining one percent share.

Exports

The low in-flow of revenue from exports between January and February of 2006 could mainly be attributed to the decrease in export values of the following product categories: chemicals from K3 billion to K2 billion, manufactured goods classified chiefly by material from K474 billion to K456 billion, machinery and transport equipment from K11 billion to K9 billion and crude materials, excluding fuels from K 59 billion to K58 billion.

Total Exports by (SITC) Sections, January – February 2006*, K'Millions

Code	Description	Jan-06	Feb-06*
0	Food & Live Animals	30,646	31,783
1	Beverages & Tobacco	7,012	13,879
2	Crude Materials, (Excluding Fuels)	59,089	57,888
3	Mineral Fuels, Lubricants & Related Materials	2,660	4,744
4	Animal & Vegetable Oils, Fats & Waxes	292	278
5	Chemicals	3,148	2,259
6	Manufactured Goods Classified Chiefly By Material	473,955	456,474
7	Machinery & Transport Equipment	10,524	9,172
8	Miscellaneous Manufactured Articles	880	1,468
9	Commodities & Transactions nec in SITC	98	61
Total:		588,304	578,006

Source: CSO, International Trade Statistics, 2006;

Note: (*) Provisional

Export Market Shares by Major Trading Partners

The major destination of Zambia's exports between January and February 2006 was the SADC region accounting for the largest market shares of about 44 and 42 percent in the respective months. The major market within the SADC region was South Africa, with market shares of 34 percent in January and 30 percent in February of 2006. This was followed by Zimbabwe with 5 and 6 percent in January and February 2006, respectively.

The second important destination of Zambia's exports was the European Union after SADC, accounting for about 18 percent in January 2006 compared with 17 percent in February 2006. Within the EU, the largest destination was the United Kingdom with a market share of about 11 and 9 percent in January and February 2006, respectively.

The Asian market was also an important outlet of Zambia's export products between January and February 2006. It accounted for market shares of 5 and 7 percent in the respective months. The major destination of Zambia's exports within this market was

China; accounting for 3 percent in January 2006 and 5 percent in February 2006.

Export market shares by major trading partners, January – February 2006

Destination	Jan-06	% Share of Total	Feb-06	% Share of Total
Total SADC Of Which:	258,693	44	242,338	42
South Africa	201,215	34	172,585	30
Zimbabwe	29,896	5	34,511	6
Tanzania	17,251	3	22,988	4
Congo (Dr)	5,800	1	4,680	1
Other SADC	4,531	1	7,574	1
Total EU Of Which:	104,547	18	95,385	17
United Kingdom	65,764	11	50,553	9
Sweden	14,683	2	25,191	4
Netherlands	11,174	2	8,783	2
Other EU	12,926	2	10,858	2
Total ASIA Of Which:	30,266	5	41,430	7
China	14,708	3	28,623	5
India	8,455	1	2,967	1
Japan	4,836	1	6,338	1
Other ASIA	2,267	0	3,502	1
Other Regions/ Partners	194,798	33	198,853	34
Total	588,303	100	578,006	100

Source: CSO, International Trade Statistics, 2006

Imports

The sharp decline in the total import value for February 2006 was mainly due to the decrease in expenditure on mineral fuels, lubricants and related materials from K114 billion in January to K25 billion in February. The outstanding products within this category include: petroleum oils/oils obtained from bituminous minerals and coke/semi coke of coal. Other product categories that experienced significant declines in import values are crude materials (excluding fuels) from K21 billion in January to K16 billion in February 2006, chemicals from K175 billion in January 2006 to K126 billion in February, 2006 and machinery and transport equipment from K248 billion to K230 billion in January and February 2006, respectively.

Total Imports by Standard International Trade Classification (SITC) Sections, January – February 2006*, K'Millions

Code	Description	Jan-06	Feb-06*
0	Food & Live Animals	53,803	70,291
1	Beverages & Tobacco	1,340	1,556
2	Crude Materials, (Exc. Fuels)	20,533	16,340
3	Mineral Fuels, Lubricants & Related Materials	113,727	24,800
4	Animal & Vegetable Oils, Fats & Waxes	11,700	11,761
5	Chemicals	174,763	126,417
6	Manufactured Goods Classified Chiefly By Material	80,044	95,611
7	Machinery & Transport Equipment	247,549	229,564
8	Miscellaneous Manufactured Articles	29,137	26,314
9	Commodities & Transactions nec in SITC	74	58
Total:		732,670	602,712

Source: CSO, International Trade Statistics, 2006; Note: (*) Provisional

Import Market Shares by Major Trading Partners

The major sources of Zambia's imports were still concentrated in SADC followed by European Union and Asia. Among these, the SADC region dominated the market, accounting for the largest shares of 60 percent in January and 68 percent in February 2006. Within SADC, South Africa again was the major source of Zambia's imports, with a share of 40 percent in January and 54 percent in February 2006. Zimbabwe was the next source accounting for shares of 14 and 9 percent in January and February respectively.

The Asian market was the second source after SADC, contributing 22 and 11 percent shares in Zambia's total import bill in January and February of 2006 respectively. Within Asia, the United Arab Emirates maintained dominance in supplying the country with import products, accounting for the largest share of 14 percent in January 2006 and 3 percent in February 2006.

The EU was also an important source of import products between January and February 2006. It accounted for market shares of 11 and 14 percent in the respective months. The major source of imports within this market was the UK, accounting for 3 percent market shares in both January and February 2006.

Import market shares by major trading partners, January – February 2006

Source	Jan-06	% Share of Total	Feb-06	% Share of Total
Total SADC Of Which:	438,204	60	412,471	68
South Africa	294,603	40	323,874	54
Zimbabwe	106,144	14	54,780	9
Tanzania	19,387	3	19,283	3
Congo (Dr)	5,857	1	5,550	1
Other SADC	12,213	2	8,984	1
Total EU Of Which:	77,798	11	86,149	14
United Kingdom	23,737	3	16,393	3
Sweden	13,936	2	13,945	2
Netherlands	6,963	1	13,271	2
Other EU	33,162	5	42,540	7
Total ASIA Of Which:	158,326	22	68,102	11
United Arab Emirates	99,767	14	20,817	3
India	20,387	3	15,026	2
China	19,968	3	14,289	2
Other ASIA	18,204	2	17,970	3
Other Regions/ Partners	58,342	8	35,990	6
Total	732,670	100	602,712	100

Source: CSO, International Trade Statistics, 2006

Informal Sector

Trading Dominates in the Non-Farm Informal Sector

The 2002/2003 non-farm informal sector results indicate that out of the 2, 005, 677 households in Zambia, a total of 506, 724 households operated an informal non-farm enterprise. These households operated a total number of 618,877 non-farm informal business enterprises, of which 358,385 were in rural areas and 260,492 were in urban areas.

One in every two non-farm informal sector enterprises owned by households in Zambia was reported to be in trading at 54 percent and about 17 percent were reported to be engaged in forestry and fishing industries. About Fifteen percent of the informal enterprises were on the other hand engaged in the manufacturing industry, while 5

percent were in the community, social and personal services.

In urban areas, the proportions of the enterprises engaged in trading and community, social and personal services were higher at 64 percent and 7 percent compared to that in the rural areas at 47 percent and 4 percent, respectively. On the other hand, the proportions of enterprises in forestry and fishing and manufacturing were higher in the rural areas at 24.3 percent and 16.7 percent compared to that in urban areas at 6.5 percent and 11.4 percent, respectively.

Distribution of Informal Enterprises by Kind of Economic Activity, Province and Residence, Zambia, 2002 – 2003

Province/ Residence	Forestry & Fishing	Manufacuri ng	Constructio n	Trade	Bars & Restaurants	Transport & Communica tions	Real Estate & Business Services	Community, social & Personal services	Other	Total Percent	Total number of enterprises
All Zambia	16.8	14.5	1.1	54.0	0.8	1.9	3.6	5.3	2.0	100	618,877
Residence											
Rural	24.3	16.7	0.8	47.0	0.4	2.1	3.1	3.9	1.6	100	358,385
Urban	6.5	11.4	1.5	63.7	1.4	1.7	4.2	7.2	2.5	100	260,492
Province											
Central	21.0	6.4	-	67.4	0.6	0.3	0.8	2.8	0.8	100	76,517
Copperbelt	5.3	12.2	1.5	65.5	2.8	2.8	2.5	7.2	0.2	100	107,121
Eastern	7.0	23.2	-	54.9	0.4	1.6	3.4	5.0	4.4	100	68,244
Luapula	47.8	12.6	1.6	28.0	0.3	1.6	2.6	3.2	2.4	100	104,027
Lusaka	2.2	8.9	2.3	61.0	0.3	2.6	4.8	11.7	6.2	100	83,830
Northern	12.9	27.8	1.4	53.1	0.5	0.3	1.9	2.0	0.0	100	59,746
North-Western	31.6	27.0	2.5	31.1	-	-	-	5.3	2.5	100	5707
Southern	6.7	18.0	0.8	60.7	0.3	1.2	9.2	2.1	1.0	100	58,213
Western	22.4	11.9	0.3	47.0	0.5	5.6	6.2	6.2	-	100	55,472

Central Province had the highest proportion of trading enterprises at about 67 percent, followed by Copperbelt Province at about 66 percent. Northwestern recorded the lowest at almost 31 percent.

In the informal fishing enterprise sector, Luapula Province recorded the highest proportion at 48 percent followed by North-western Province with 31.6 percent. The higher proportion of enterprises in the forestry and fishing industry in North-western Province could largely be attributed to informal forestry enterprises.

In manufacturing informal sector industry, Northern and North-western provinces recorded the highest proportion of enterprises at about 28 percent and 27 percent, respectively. Central and Lusaka provinces recorded the lowest proportion with 6 percent and 9 percent, respectively.

Lusaka and Copperbelt provinces had the highest proportions of enterprises in the community, social and personal services. Northern and Southern provinces had the lowest proportion of informal enterprises in this sector.

Living Conditions

Malaria, Diarrhoea, TB – Claim More Lives!

According to the living conditions monitoring survey IV results, 22 percent of the deaths in all the households were caused by malaria/fever, while Diarrhoea and Tuberculosis accounted for 11.8 percent and 10.4 percent of deaths in all households, respectively. Chest infection was the other main cause of deaths with 9.6 percent.

In rural areas, Malaria accounted for most of the deaths, 22.1 percent, followed by Diarrhoea, 13.3 percent and Coughs or chest infections, 10.9 percent. In urban areas, Malaria accounted for most of the deaths and was followed by tuberculosis, 17.1 percent and Diarrhoea, 8.6 percent.

Analysis by sex shows that deaths caused by Malaria and Tuberculosis were more among males than among females. Malaria accounted for 23.5 percent of male deaths compared to 19.8 percent for female deaths while tuberculosis accounted for 11.1 percent of male deaths and 9.7 percent of female deaths. Diarrhoea on the other hand accounted for more female deaths with 13.7 percent compared to 10.1 percent for male deaths.

Causes of Death by Rural Urban, Sex and Poverty Status of the Household, 2004

Cause of Death	All Zambia	Rural	Urban	Sex		Poverty Status		
				Male	Female	Extremely poor	Moderately poor	Non poor
Fever/Malaria	21.7	22.1	21.0	23.5	19.8	21.1	19.4	23.8
Cough/Chest infection	9.6	10.9	7.0	8.4	10.9	10.0	6.9	10.1
Tuberculosis	10.4	7.2	17.1	11.1	9.7	11.1	8.7	10.0
Asthma	1.8	2.1	1.1	2.2	1.3	1.5	1.9	2.1
Bronchitis/Pneumonia	4.8	5.2	3.9	4.8	4.8	4.5	4.7	5.3
Diarrhoea	11.8	13.3	8.6	10.1	13.7	13.3	14.9	8.1
Vomiting	0.8	0.6	1.0	0.6	0.9	0.8	1.7	0.3
Abdominal Pain	5.2	6.1	3.3	5.3	5.1	5.1	5.1	5.4
Liver infection	1.2	1.3	1.2	1.8	0.6	1.1	1.2	1.5
Lack of Blood/Anaemia	5.1	5.4	4.6	5.1	5.2	5.0	3.6	6.0
Boils	0.2	0.2	0.0	0.1	0.3	0.1	0.1	0.3
Skin rash/infection	0.6	0.7	0.4	0.7	0.6	0.8	.	0.7
Piles/Haemorrhoids	0.2	0.2	0.0	0.0	0.3	0.1	0.8	0.1
Shingles/Herpes	0.4	0.5	0.2	0.2	0.6	0.7	.	0.1
Paralysis of any kind	1.5	1.5	1.4	1.8	1.1	1.2	2.0	1.6
Stroke	0.8	0.4	1.6	1.0	0.7	0.6	1.5	0.9
Hypertension	1.7	1.1	2.8	1.0	2.4	1.4	1.0	2.3
Diabetes/Sugar	1.0	0.7	1.8	1.4	0.6	0.9	1.3	1.1
Eye infection	0.2	0.2	.	0.1	0.3	0.3	0.1	.
Toothache/Mouth infection	0.5	0.7	0.2	0.5	0.6	0.4	2.0	0.2
Headache	3.0	2.7	3.5	2.5	3.4	3.1	4.2	2.2
Measles	0.5	0.6	0.3	0.6	0.4	0.7	0.8	.
Jaundice/Yellowness	1.7	1.8	1.4	2.1	1.2	1.9	2.0	1.2
Other	15.3	14.3	17.4	15.1	15.5	14.2	16.2	16.7
Total	100.0	100.0	100.0	100.0	100.0	100.0	100.0	100.0

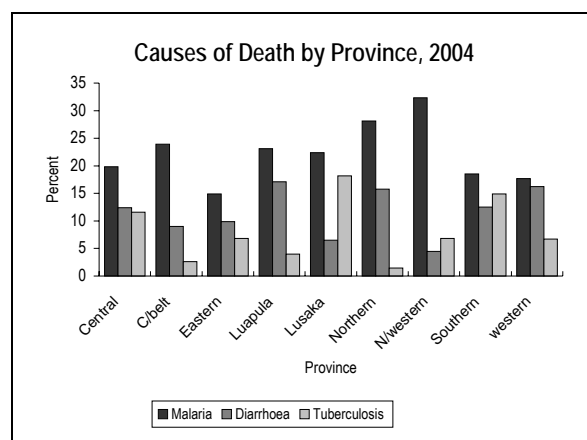
Source: Living Conditions Monitoring Survey IV

The distribution of causes of death by poverty status of the households shows that in all poverty categories Malaria was the main cause of death. For the extremely poor households, Malaria ranked highest as the main cause of death followed by Diarrhoea, Tuberculosis and chest infections. For moderately poor households, Malaria was followed

by Diarrhoea and tuberculosis as the main causes of death. In non-poor households the percentage of deaths caused by Malaria was even higher than that at national level, 23.8 percent. After malaria, the other major causes of deaths were Tuberculosis, cough/chest infections and Diarrhoea.

At Provincial level, Malaria was reported to be the major cause of death in all the provinces. The highest percentage of deaths caused by malaria was reported in North-western province with 32.3 percent. The other provinces with high percentages, above the national average, of deaths caused by Malaria were Northern, 28.1 percent, Copperbelt, 23.9 percent, Luapula, 23.1 percent and Lusaka 22.4 percent.

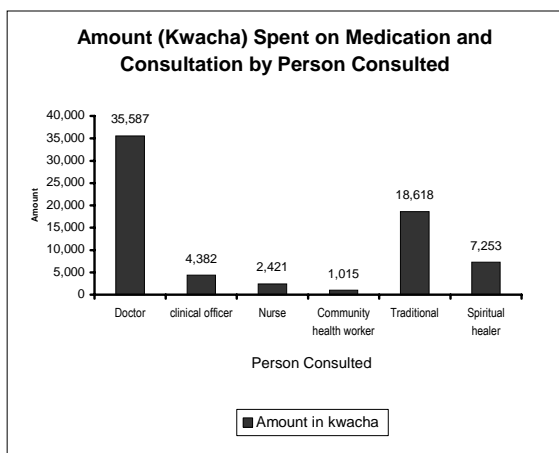
Lusaka Province recorded the highest number of persons that died from TB with 18.2 percent followed by Southern and Central provinces with 14.9 percent and 11.6 percent, respectively. Diarrhoeal diseases caused more deaths in Luapula (17.1 percent), Western (16.2 percent) and Northern (15.8 percent).



Source: L CMS IV

Medical Doctors Demand more user Fees - reveals LCMSIV!

During the 2004 Living Conditions Monitoring Survey (LCMS IV), it was found that the highest amount of money spent by people reporting illness for either consultation or medication was paid to Medical doctors at K35,587 on average per visit. This was followed by the amount paid to Traditional healers at K18,618, with the least payment being made to community health workers. The situation has not changed from the 1998 Living Conditions Monitoring Survey results. Persons who consulted medical doctors in 1998 paid more at K16,599 on average per visit, followed by the traditional healers at K10,000, with the least payment being made to nurses/midwives



The amount that people spent on medication and consultation on average overall, was K9,167. The average amount spent in rural areas was 4 times less than that spent in urban areas.

Payment for Consultation

The survey also reveals that Western Province had the highest proportion of persons reporting to have paid directly for consultation to different health personnel. Northern Province had the lowest proportion of persons paying directly for consultation and it also had the highest proportion reporting not to have paid for their consultation.

The proportion of persons that paid directly was the same in urban areas and rural areas at 55 percent. However, the rural areas had a higher proportion of persons that did not pay for consultation, 38 percent, than urban areas with 28 percent. The proportion that used pre payment schemes were higher in urban than in rural areas.

Overall it was indicated that a proportion of 35 percent did not pay for their consultation. The proportion of persons that used pre payment schemes were very low, with a total of 6 percent for both high and low cost schemes. Only 1 percent reported that employers paid for their consultation.

Proportion of persons who consulted over the illness by province and Mode of Payment Used to pay for consultation, 2004.

Residence/ Provinces	Mode of Payment							Total	
	Pre Pay low cost	Pre pay high cost	Paid by employer	Paid by insurance	Paid part and others	Paid directly	Did not pay		Paid by others
All Zambia	5	1	1	0	0	55	35	1	100
Rural/Urban									
Rural	4	1	0	0	0	55	38	1	100
Urban	8	3	3	0	1	55	28	2	100
	Province								
Central	12	3	1	1	0	54	28	2	100
Copperbelt	2	2	4	0	1	60	28	2	100
Eastern	2	0	0	0	.	48	48	1	100
Luapula	1	0	0	0	1	55	42	0	100
Lusaka	20	4	4	0	1	47	22	2	100
Northern	1	0	1	1	0	46	50	2	100
North Western	6	1	.	0	0	63	29	1	100
Southern	3	1	1	1	0	65	26	3	100
Western	3	0	0	.	.	68	29	1	100

Source: CSO LCMS IV, 2004

1 in 5 Persons Lack Formal Education

The 2004 Living Conditions Monitoring Survey results indicate that 22 percent of the population aged 5 years and above had had no formal education compared to 27 percent reported in 1998. The results further show that in 2004, 25 percent had completed lower primary, 27 percent completed upper primary, 13 percent junior secondary and 11 percent senior secondary. In 1998, 23 percent had completed lower primary, 28 percent had completed upper primary, 11 percent junior secondary and 10 percent senior secondary. Those that had completed GCE 'A' level or A level in 2004 accounted for 1 percent compared to 1.8 percent in 1998. Those that had attained a Bachelor's degree and above in 2004 accounted for 2 percent compared to 0.2 percent in 1998.

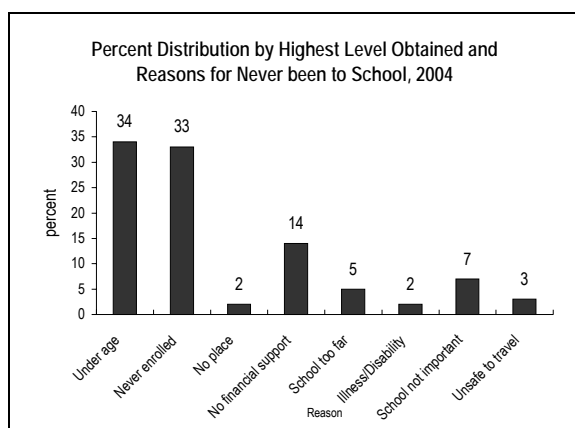
Analysis by sex shows that in 2004, 24 percent of females had no formal education compared to 20 percent for males. In 1998 a similar pattern was observed with females recording the highest proportion of persons with no formal education at 35 percent compared to 29 percent for their male counterparts. Results from the LCMS IV also indicate that more males were more likely to attain a degree and above with 3 percent than their female counterparts with 2 percent. A similar pattern was also observed for persons that had attained a degree and above in 1998 with males reporting 0.4 percent compared to 0.1 percent for females.

Percentage Distribution of Population 5 Years and Above by Highest Level of Education Attained, Zambia, 1998 and 2004

Sex		Highest level of Ed. obtained						Total	
		None	Grade 1 to 4	Grade 5 to 7	Grade 8 to 9	Grade 10 to 12	Grade 12 GCE (A)/College/Undergraduate		Degree and above
Zambia 2004	Total	22	25	27	13	11	1	2	100
	Male	20	23	26	13	14	1	3	100
	Female	24	26	27	12	8	1	2	100
Zambia 1998	Total	27	23	28	11	10	1.8	0.2	100
	Male	24	22	27	12	13	2.2	0.4	100
	Female	29	23	28	10	7	1.4	0.1	100

Source: LCMS 1998 and 2004

The age factor was the most common cited reason for not attending formal education. The results indicated that 34 percent of persons had never attained formal education because they were under age, 33 percent had never enrolled while 14 percent never attended school due to lack of financial support. Those that reported that school was not important or that school was too far accounted for 7 percent and 5 percent respectively.



Source: LCMS IV

More Widows than Widowers, Reveals LCMS IV!

The proportion of married persons, especially women is one of the most important proximate determinants of fertility because child conception mostly occurs within marital union.

Out of 3,424,241 females aged 12 years and above, the majority with 47 percent were married. These were followed by those that had never been married at 37 percent. Those that had been widowed and divorced were at 9 percent and 5 percent respectively while the separated females recorded the least at 2 percent.

Comparatively, of the 3,358,023 males aged 12 years and above, 46 percent were married, followed by those that had never been married at 50 percent. Men that had been widowed and divorced were only at 2 percent each as opposed to 9 percent and 5 percent of their female counterparts. The proportion of males recorded to be separated was at 1 percent. The difference in the percentage of the widowed between males and females may be attributed to the fact that men most often re-marry faster after they are widowed compared to women.

Percentage Distribution of Persons Aged 12 Years and Above by Marital Status, Zambia, 2004

Sex/ Age Group	Marital Status					Total Percent	Persons aged 12 years and above
	Never married	Married	Separated	Divorced	Widowed		
All Zambia	43	47	1	3	5	100	6,782,264
Sex							
Male	50	46	1	2	2	100	3,358,023
Female	37	47	2	5	9	100	3,424,241
Age-group							
12 – 14	99	1	0	0	0	100	883,249
15 – 19	91	9	0	0	0	100	1,213,179
20 – 24	56	40	1	2	0	100	1,082,904
25 – 29	26	66	2	4	2	100	864,476
30 – 49	7	79	2	6	7	100	1,935,816
50 +	2	66	1	6	25	100	802,641
Male							
12 – 14	99	1	0	0	0	100	445,664
15 – 19	98	2	0	0	0	100	610,917
20 – 24	77	22	0	1	0	100	499,847
25 – 29	36	59	2	2	0	100	410,911
30 – 49	8	85	2	3	2	100	992,221
50 +	2	87	1	3	8	100	398,464
Female							
12 – 14	99	1	0	-	-	100	437,585
15 – 19	83	15	1	1	0	100	602,261
20 – 24	38	55	2	4	1	100	583,056
25 – 29	17	71	3	5	3	100	453,566
30 – 49	5	72	3	9	12	100	943,596
50 +	1	46	2	10	41	100	404,177

Source: LCMS IV

The distribution by age group shows that, the majority of females in the younger age groups 19 years and below had never been married. It was however observed that the percentage of married females started increasing from age group 20-24 at 55 percent. The percentage of married women reached the peak at age group 25-29 and 30 – 49 accounting for 71 and 72 percent, respectively.

Meanwhile, the percentage of married females dropped in the age group 50 years and above at 46 percent.

The LCMS (IV) further reveals that the distribution of widowed persons by age group 50 and above showed that a higher percentage of females were widowed at 41 percent compared to only 8 percent for males.

International Women’s Day – 8th March, 2006

THEME: “2006: ENHANCEMENT OF WOMEN IN DECISION MAKING FOR SUSTAINABLE DEVELOPMENT”

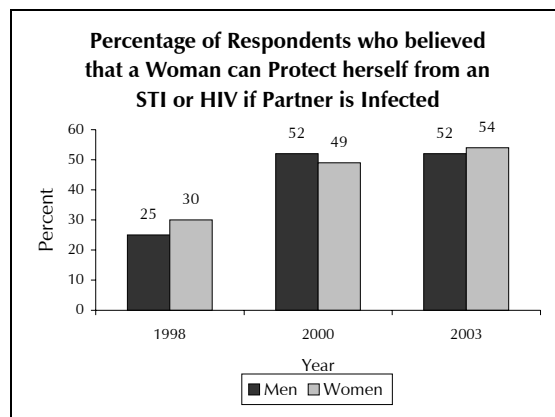
Are we getting there?



On the 8th of March 2006, Zambia joined the rest of the world in commemorating the International Women’s Day. The national theme adopted for the celebration was; **“2006: Enhancement of Women in Decision Making for Sustainable Development”**. In trying to interpret the theme and making an assessment of women’s position in Zambia in relation to the theme, some statistics on women’s attitude from different household surveys are analyzed.

The Sexual Behaviour Surveys of 1998, 2000 and 2003 inquired from both men and women whether a woman can protect herself from HIV/STI if she knew that the husband was infected. According to the results there has been an improvement in the proportions of both men and women over the survey periods 1998, 2000 and 2003 who agree that a woman can protect herself. Percentages have risen from 25 to 52 percent for men and from 30 to 54 percent for women. However these results still show substantial percentages of both men and women who feel a woman cannot protect herself. In terms of sexual negotiation therefore, 46 percent of women and 48 percent of men still think it is impossible for a woman to make a decision not to

have sex with a husband who is infected according to the 2003 Sexual Behaviour Survey results.



Source: Zambia Sexual Behaviour Survey; 1998, 2000, 20003

The 2001-2002 Zambia Demographic and Health Survey collected some information on wife beating to assess women’s attitude towards this vice. Although generally some people might think that problems between husband and wife could be solved by dialoguing, it is shocking to note from the results of the survey that notable proportions of women agree that wife beating is justified for specific reasons. The most popular reason cited as justifiable for beating was a wife going out with another man. This reason was agreed to by about 79 percent of women. The next common cited reason was that of a wife neglecting children which was reported by about 61 percent of the women. Arguing with a husband was also viewed as a factor for wife beating by 52 percent of women. The question raised in this regard is whether women who think arguing with a man should not be tolerated, implied that women could not make decisions at the household level even if they had brilliant ideas. They will keep their ideas because they can’t argue them out.

Forty seven percent of women agreed that a husband is justified to hit or beat a wife who refuses to have sex with him. This is an indication that some women still think a woman has no right to make a decision about her sexuality. Results revealed also that the notion of a woman’s place being in the kitchen is still upheld by some women. Forty five percent of women agreed that a man is justified in beating a wife who cooks late or cooks bad food.

Percentage of women who agree that it is justified for a husband to hit or beat his wife for specific reasons

Reasons for Beating	Percentage of Women
Cook bad food/Cooks Late	45.4
Argues with him	52.1
Goes out with another man	78.8
Neglects Children	60.9
Refuses to have sex	47.0

Source: 2001-2002 Zambia Demographic and Health Survey

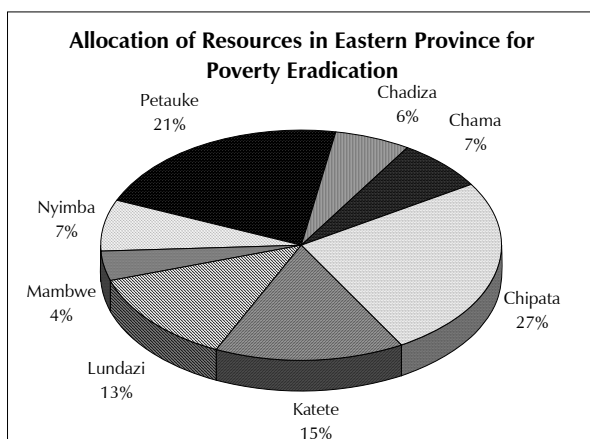
Feature Article

Sixty Seven percent of the Population in Eastern Province is Poor!

Eastern Province is one of the provinces that have reported a high proportion of poor people. According to the latest Living Conditions Monitoring Survey conducted in 2004, about 67 percent of the population lives in total poverty and the province would require K813.5 billion every year to bring all poor people to the poverty line.

Meanwhile, the province has shown a decrease in poverty levels by 14 percentage points, from 81 percent in 1998 to 67 percent in 2004.

Eastern Province has a population of 1,516,554 with eight administrative districts and Chipata district is a provincial capital. In terms of resources required to eradicate poverty in the districts, Chipata District with the highest population of extremely poor people would require the largest share of 27 percent. Twenty one percent (21 percent) would go to Petauke and 15 percent to Katete District. Though Nyimba has the highest proportion of poor people, it would only require a 7 percent share. This is all because of its small population. The least share of 4 percent would go to Mambwe District.



Source: CSO, Living Conditions Monitoring Survey IV, 2004

Household Heads in Wage Employment have Lower Poverty Levels.

Incidence of poverty by economic activity of household head in Eastern Province shows that household heads engaged in farming, fishing and forestry were more likely to be poor than those in wage employment or running a business.

Households whose heads were in wage employment, recorded the lowest incidence of both extreme and moderate poverty in the years 1998 and 2004.

Extreme poverty for heads in this category was reported at 48 percent in 1998 and 29 percent in 2004.

The incidence of total poverty (extreme + moderate poverty) for those engaged in farming, fishing and forestry was reported at 73 percent as compared to 44 percent for those in wage employment and 63 percent for those who were running a business, in the year 2004. Similarly, in 1998 the highest incidence of total poverty was reported among households whose heads were engaged in farming, fishing and forestry. However, the total poverty levels for household heads in this category reduced from 83 percent in 1998 to 73 percent in 2004.

Incidence of Poverty by Economic Activity, Eastern Province, 1998 and 2004

Economic Activity	Poverty Status – 1998 and 2004								Population	
	Total Poor		Extremely Poor		Moderately Poor		Not Poor		1998	2004
	1998	2004	1998	2004	1998	2004	1998	2004		
	Percent	Percent	Percent	Percent	Percent	Percent	Percent	Percent		
All Province	81	67	66	55	15	12	19	33	1,298,000	1,516,554
Wage employment	68	44	48	29	20	15	32	56	119,263	220,566
Running a business	73	63	53	43	20	20	26	37	72,915	144,742
Farming/ Fishing/Forestry	83	73	69	62	14	11	17	28	1,081,021	1,130,946
Other	74	72	60	55	14	17	26	28	24,741	20,301

Source: CSO, Living Conditions Monitoring Survey IV, 2004

More Female-Headed Households in Poverty

The incidence of poverty by residential area, shows a decline in both the rural and urban areas of Eastern Province. In the rural areas, the incidence of poverty declined by 7 percentage points from 82 percent in 1998 to 75 percent in 2004, while in the urban areas, the reduction was by 10 percentage points from 66 percent in 1998 to 56 percent in 2004. Similarly, extreme poverty levels also recorded declines in both rural and urban areas, with the rural areas recording decline of 4 percentage points, from 67 percent in 1998 to 63 percent in 2004. Extreme poverty levels in the urban areas was estimated at 39 percent in 2004 compared to 48 percent in 1998. The proportion of non poor persons in both rural and urban areas also recorded increases. The proportion for the non poor in the rural areas increased by 7 percentage points from 18 percent in 1998 to 25 percent in 2004, while in urban areas, the proportion of non poor people increased from 34 percent in 1998 to 44 percent in 2004.

An analysis of poverty by sex of head of households shows that the proportion of non-poor persons in 2004 was high among male-headed households at 33 percent than in female-headed households at 30 percent. This implies that there are more female-headed households living in poverty than male-headed households. Furthermore, the incidence of extreme poverty was reported at 59 percent for female-headed households and 54 percent for male-headed households. However, the survey results show that the incidence of extreme poverty has reduced for both male and female-headed households over the period. For male-headed households, it has reduced from 63 percent in 1998 to 54 percent in 2004 while that for female-headed households has reduced from 76 percent to 59 percent in 1998 and 2004, respectively.

Incidence of Poverty by Sex of Head of Household, Rural/Urban, Eastern Province, 1998 and 2004

Sex of Head	Poverty Status – 1998 and 2004								Population	
	Total Poor		Extremely Poor		Moderately Poor		Not Poor		1998	2004
	1998	2004	1998	2004	1998	2004	1998	2004		
All Province	81	67	66	55	15	12	19	33	1,298,000	1,516,554
Residence										
Rural	82	75	67	63	15	12	18	25	1,179,734	1,156,782
Urban	66	56	48	39	18	17	34	44	118,266	359,772
Sex of head										
Male	79	66	63	54	16	12	20	33	1,018,676	1,228,297
Female	84	70	76	59	8	11	15	30	279,324	288,257

Source: CSO, Living Conditions Monitoring Survey IV, 2004

Education, key to low levels of Poverty

Analysis of poverty by education status of household heads shows that poverty reduced with increasing levels of education. The more educated the head of household is the less the incidence of poverty. The survey results show that household heads with tertiary education were more likely to be non-poor than those with no education. It is further indicated that the incidence of total poverty (extreme + moderate poverty) in 2004 was high among household heads with no education at 73 percent, as compared to 25 percent of those household heads that had attained tertiary education.

In 1998, the incidence of poverty was 90 percent for household heads with no education and 65 percent for those that had attained higher education. It is also noticeable that the proportion of extremely poor households is more likely to reduce over a series of time, for household heads with higher education than those with no education. In 1998, the extreme poor households with tertiary education reduced from 24 percent to 10 percent in 2004. In the same period of time, proportion of the extreme poor households' heads with no education also reduced from 76 percent to 64 percent.

Incidence of Poverty by Education Status of Household Head, Eastern Province, 1998 and 2004

Educational Level	Poverty Status – 1998 and 2004								Population	
	Total Poor		Extremely Poor		Moderately Poor		Not Poor		1998	2004
	1998	2004	1998	2004	1998	2004	1998	2004		
All Province	81	67	66	55	15	12	19	33	1,298,000	1,516,554
Education of head										
None	90	73	76	64	14	9	11	28	393,298	271,625
Primary school	82	75	67	62	15	13	18	25	696,366	795,182
Secondary	60	56	49	43	11	13	40	43	182,732	369,347
Tertiary	65	25	24	10	41	15	35	75	25,604	80,400

Source: CSO, Living Conditions Monitoring Survey IV, 2004

Employers had always met the Poverty Line

The survey results confirmed that the proportion of non-poor persons was highest among household heads that were employers at hundred percent (100 percent) for both years 1998 and 2004. It was also reported that parastatal employees recorded a high proportion of non-poor persons at 89 percent in the year 2004, representing an increase of 58 percentage points when compared to that reported not to be poor in 1998.

The proportion of non-poor persons whose household heads were unpaid family workers, increased by 21 percentage points from 55 percent in 1998 to 76 percent in 2004. On the other hand, the LCMS IV results show that in 2004, the incidence of poverty was high among persons whose household heads were self-employed and local government employees with 72 and 71 percent respectively.

Incidence of Poverty and Type of Employer of Head, Eastern Province, 1998 and 2004

Type of Employer	Poverty Status – 1998 and 2004								Persons	
	Total Poor		Extremely Poor		Moderately Poor		Not Poor		1998	2004
	1998	2004	1998	2004	1998	2004	1998	2004		
All Province	81	67	66	55	15	12	19	33	1,298,000	1,516,554
Type of employer										
Self employed	82	72	68	60	14	12	18	28	1,178,440	1,290,764
Central Government employee	66	33	49	19	17	14	34	66	62,084	92,989
Local Government employee	70	71	45	68	25	3	30	29	14,987	10,944
Parastatal employee	69	11	57	2	12	9	31	89	4,789	13,784
Private sector employee	76	53	48	33	28	20	24	46	32,096	82,252
International /Embassy employee	21	29	21	22	.	7	79	71	2,541	9,735
Employer	0	0	100	100	328	2,067
Unpaid family worker	45	24	45	9	.	15	55	76	935	3,152
Other	74	66	65	50	9	16	26	34	1,801	10,868

Source: CSO, Living Conditions Monitoring Survey IV, 2004

Young Household Heads Experience more Poverty

In 2004, high incidence of total poverty was reported in households whose heads were aged 12-19 years with 85 percent. However, in 1998 the situation was different with high incidence of total poverty having been reported among those aged 30-59 years, at 85 percent. The proportion of non-poor household heads in the age groups 12-19 years and 60+ years has declined over the years. The proportion of non-poor household heads reduced from 26 percent in 1998 to 15 percent in 2004 for those household heads aged 12-19 years and from 23 percent in 1998 to 18 percent in 2004 for those household heads aged 60 years and above.

Incidence of Poverty by Age of Head of Household, Eastern Province, 1998 and 2004

Age of Head	Poverty Status – 1998 and 2004								Population	
	Total Poor		Extremely Poor		Moderately Poor		Not Poor		1998	2004
	1998	2004	1998	2004	1998	2004	1998	2004		
Percent	Percent	Percent	Percent	Percent	Percent	Percent	Percent			
All Province	81	67	66	55	15	12	19	33	1,298,000	1,516,554
Age of head										
12 – 19	74	85	43	15	31	70	26	15	1,643	1,845
20 – 29	69	64	50	51	19	13	31	36	207,082	261,956
30 – 59	85	65	70	53	15	12	15	35	890,217	1,057,192
60 and above	77	82	68	70	9	12	23	18	199,058	195,561

Source: CSO, Living Conditions Monitoring Survey IV, 2004

Ninety Percent of the Population in Nyimba District live below the poverty line!

District level poverty results indicate that Nyimba District had the highest proportion of poor persons in 2004. Survey results indicate that 90 percent of the population in Nyimba was poor, followed by Chama District with 81 percent. Lundazi on the other hand reported the least proportions of poor persons with 58 percent of its population having been reported to be poor. Extreme poverty was also high in Nyimba District, 86 percent, followed by Chama District with 68 percent. The least proportions of extreme poverty were reported in Lundazi at 41 percent.

District Levels and Trends of Poverty, Eastern Province, 1998 and 2004

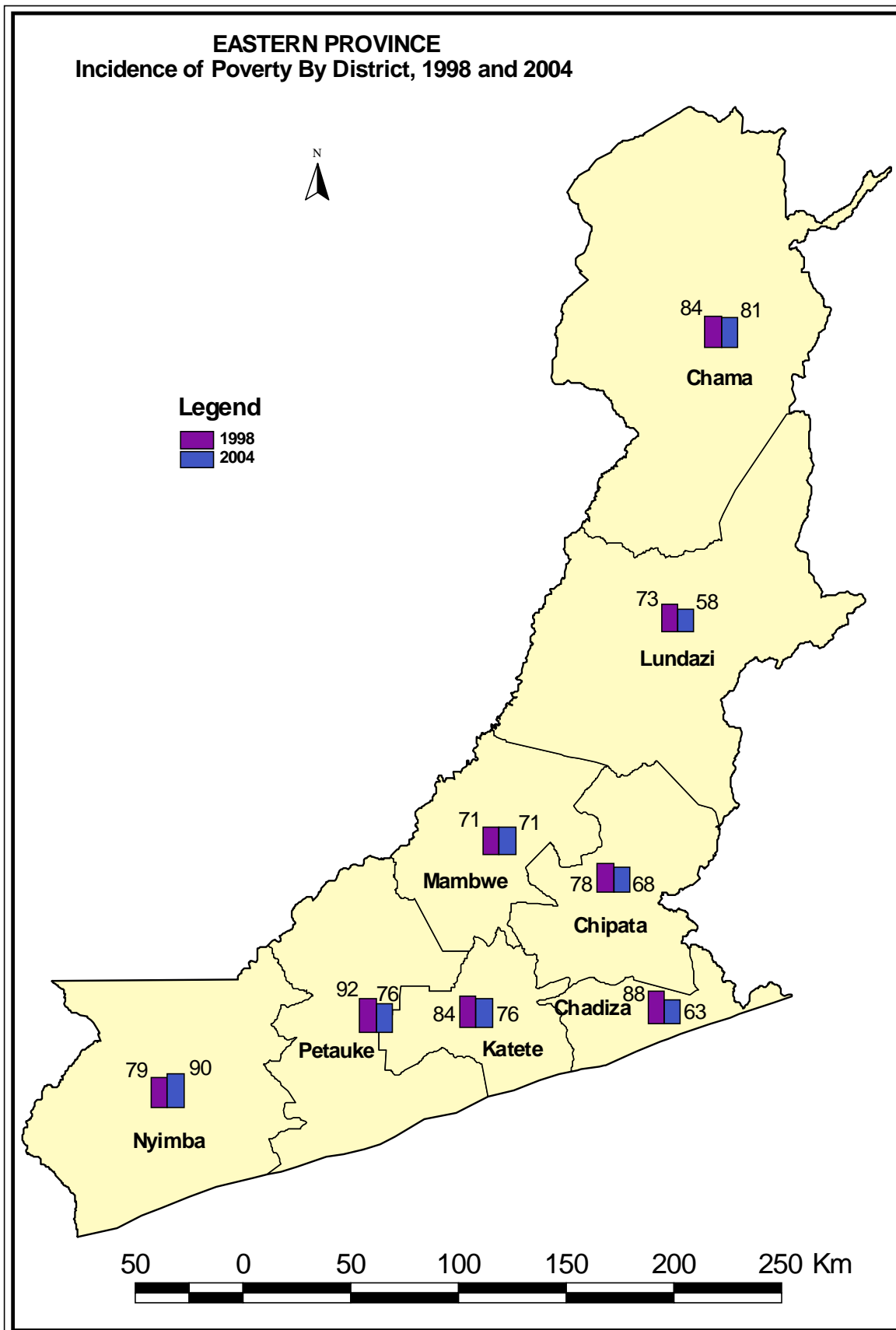
District	Poverty Status – 1998 and 2004								Population	
	Total Poor		Extremely Poor		Moderately Poor		Not Poor		1998	2004
	1998	2004	1998	2004	1998	2004	1998	2004		
%	%	%	%	%	%	%	%			
All Province	81	67	66	55	15	12	19	33	1,298,000	1,516,554
District										
Chadiza	88	63	76	51	12	12	12	37	62,763	103,582
Chama	84	81	74	68	10	13	15	19	81,535	90,331
Chipata	78	68	65	55	13	13	22	32	350,579	401,945
Katele	84	76	75	62	9	14	17	24	176,888	213,552
Lundazi	73	58	54	41	19	17	28	43	229,513	284,022
Mambwe	71	71	64	55	7	16	31	29	44,721	53,294
Nyimba	79	90	58	86	21	4	25	10	81,358	79,890
Petauke	92	76	72	63	20	13	9	24	270,643	289,938

Source: CSO, Living Conditions Monitoring Survey IV, 2004

Trends at district level also show a drop in the incidence of extreme poverty over a period of time (1998-2004) except for Nyimba District. Chadiza District recorded the most significant reduction in the incidence of extreme poverty i.e. from 76 percent in 1998 to 51 percent in 2004, representing a decline of about 25 percentage points. However moderate poverty in the District has remained the same over the same period. Nyimba District on the other hand reported an increase in the incidence of poverty. The proportion of extremely poor persons in Nyimba District increased from 58 percent in 1998 to 86 percent in 2004 while moderate poverty has alarmingly reduced from 21 percent to 4 percent. The number of non poor persons has also declined to 10 percent from 25 percent reported in 1998. The other district that has seen a minor drop in the not poor category is Mambwe District with 2 percentage points decline in the number of non poor persons.

In conclusion, a trend analysis of the total poverty level in Eastern Province shows that the incidence of poverty has reduced over time. The total poverty level has reduced from 81 percent in 1998 to 67 percent in the year 2004. The extreme poverty level also reduced from 66 percent in 1998 to 55 percent in 2004. Similarly, moderate poverty has reduced from 15 percent in 1998 to 12 percent in 2004.

At residential level, the proportion of extreme poverty levels in rural areas has reduced from 67 percent in 1998 to 63 percent in 2004 while moderate poverty levels reduced from 15 percent in 1998 to 12 percent in 2004. Furthermore, the trend in urban areas was similar to that in rural areas with extreme poverty reducing from 48 percent in 1998 to 39 percent in 2004.



The Layman and Statistics

- **Re-exports:** This refers to goods imported into the country and then exported in the same form or after minor improvements. For example, blending, packing and repairing.
- **Trade Deficit:** It's a situation where a country is importing more than it is exporting.
- **Domestic Exports:** These are goods originating from the exporting countries.
- **SITC:** Stands for Standard International Trade Classification. It is a trade statistical nomenclature mainly used in trade statistical analysis.
- **BEC:** It stands for Broad Economic Categories. This shows how imported goods are used domestically.

Now Available

- ☞ **Living Conditions Monitoring Survey IV Report**
- ☞ **Selected Social Economic Indicators, 2003/2004**
- ☞ **Zambia in Figures, 2003/2004**
- ☞ **The Informal Sector in Zambia 2002/2003**

Soon to be released!

- ☞ **Annual External Trade Statistics Bulletin, 2005**
- ☞ **First Quarter 2006 External Trade Statistics Bulletin**
- ☞ **Poverty Report**
- ☞ **Zambia Sexual Behaviour Survey 2004**

Subscribe for your free electronic copy of "The Monthly" online at www.zamstats.gov.zm

*The Editorial Team would like to thank all
Media Institutions and Users of*

“The Monthly”

Thank you for supporting us

Editorial Team

Dr. Buleti G. Nsemukila - Director
 John Kalumbi - Deputy Director
 Batista Chilopa – Operations Manager
 Lee Chileshe – Acting Publications and Marketing Manager
 Joseph Tembo – Senior Statistician
 Palver Sikanyiti – Statistician
 Pamela Kauseni – Statistician
 Shebo Nalishebo – Statistician
 Lubinda Mukata - Statistician
 Cecillia Masheke – Librarian
 Chisuya Sandu – Assistant Field Co-ordinator
 Petronella Kaputu – Press Liaison Officer