



Republic of Zambia

The Monthly

Central Statistical Office

Volume 98

Website: www.zamstats.gov.zm

May, 2011

Foreword

Welcome to the Monthly presentation organised by the Dissemination Branch of the Central Statistical Office (CSO). The CSO embarks on vigorous information delivery strategy to major stakeholders and the media institutions in order to increase utilisation of statistical products and services. The office produces a number of statistical products in the Economic, Social, Agricultural and Environmental areas. The information collected in these areas may be used for various purposes including policy formulation, planning, implementation, monitoring and evaluation of programmes and projects.

This Monthly publication is an attempt to provide highlights of CSO's work and how it can help media institutions and the general public to make use of data and information for sustainable national development and decision-making.

I would like to urge our readers and users of statistical information to send to us any comments that may enhance statistical production and contribute to the improvement of this bulletin.

John Kalumbi
Acting Director of Census and Statistics

26th May, 2011

Inside this Issue

- ***Zambia Expected to Produce Highest Quantity of Maize Ever!***
- ***May Inflation slightly increases to 8.9 percent.***
- ***April 2011 records Trade Surplus***
- ***Selected Socio - Economic Indicators***

Crop Forecasting Survey (CFS)

Zambia Expected to Produce Highest Quantity of Maize Ever!

The 2010/2011 Crop Forecasting Survey (CFS) results show that the production of Maize is expected to increase by 8 percent from 2.80 million metric tonnes during the 2009/2010 agricultural season to 3.02 million metric tonnes during the 2010/2011 agricultural season. The results also show that area planted to maize increased by 9 percent from 1.24 million hectares to 1.36 million hectares. Furthermore, area harvested to maize is expected to increase by 2 percent from 1.08 million hectares during the 2009/2010 agricultural season to 1.10 million hectares during the 2010/2011 agricultural season.

Despite the increase in production, the average yield rate of maize is expected to slightly decrease by 1 percent from 2.25 metric tonnes per hectare in 2009/2010 agricultural season to 2.23

metric tonnes per hectare in 2010/2011 agricultural season. This is mainly because large-scale farmers who contribute largely to high yields reduced the area planted to maize. This has led to the overall decline in national average yield rate.

The increase in maize production in the 2010/2011 agricultural season could largely be attributed to the good price farmers received last season and the increase in the area planted to maize by small and medium-scale farmers. In addition, more farmers reported using hybrid seed than recycled or local seed this agricultural season compared to the 2009/2010 agricultural season. The other reason is the increase in the number of beneficiaries of the Farmer Input Support Programme (FISP) from 500,000 to 890,000 farmers.

Crop Production Estimates, 2009/2010 to 2010/2011 Agricultural Seasons

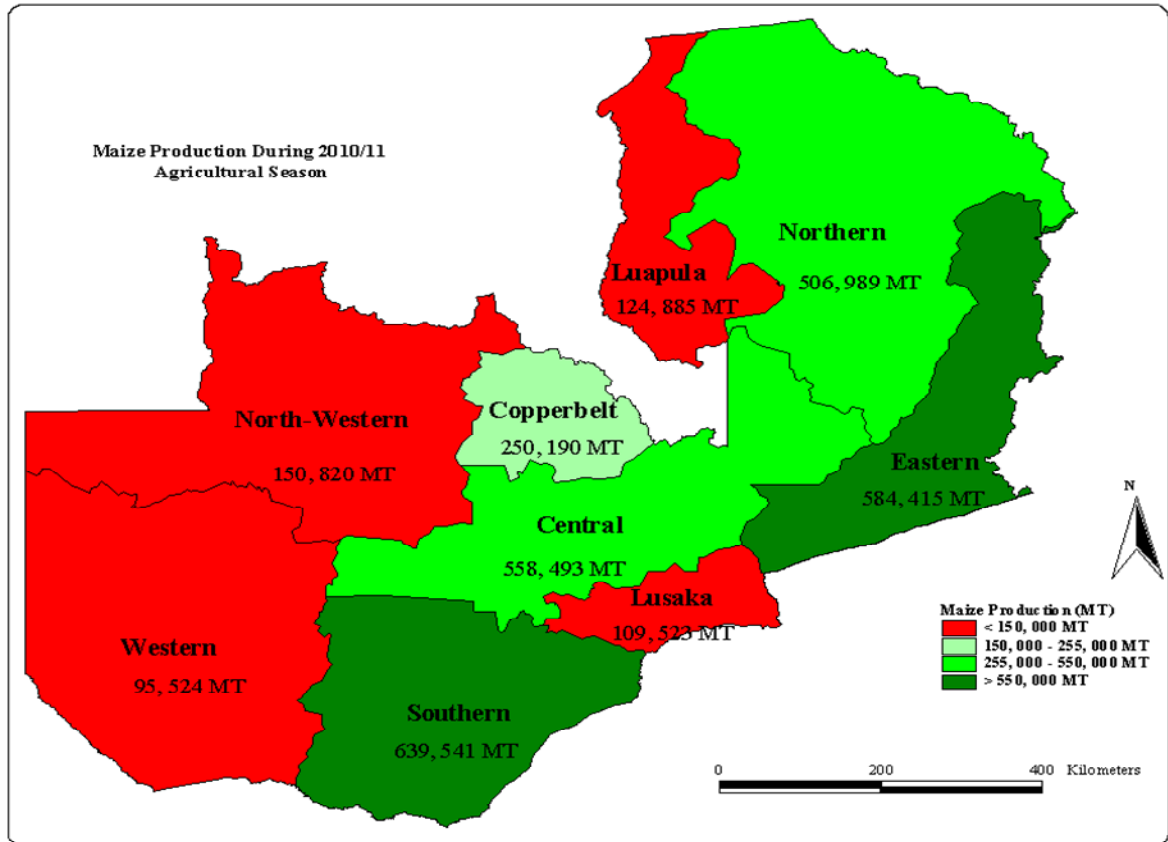
CROP	Area Planted (Ha)			Area Expected to be Harvested (Ha)			Expected Production (MT)			Yield Rate (MT/Ha)		
	2009/2010	2010/2011	% change	2009/2010	2010/2011	% change	2009/2010	2010/2011	% change	2009/2010	2010/2011	% change
Maize	1,242,268	1,355,764	9	1,080,558	1,101,785	2	2,795,483	3,020,380	8	2.25	2.23	-1.00
Sorghum	34,251	26,854	(22)	28,908	22,446	(22)	27,732	18,458	(33)	0.81	0.69	-15.11
Rice	35,841	33,995	(5)	30,788	27,496	(11)	51,656	49,410	(4)	1.44	1.45	0.85
Millet	56,789	42,663	(25)	50,808	39,282	(23)	47,997	37,644	(22)	0.85	0.88	4.40
Sunflower	54,450	40,894	(25)	51,602	36,886	(29)	26,420	21,954	(17)	0.49	0.54	10.64
Groundnuts	268,803	224,121	(17)	255,782	209,237	(18)	164,602	139,388	(15)	0.61	0.62	1.56
Soyabans	62,331	61,422	(1)	60,777	59,988	(1)	111,888	116,539	4	1.80	1.90	5.70
Cotton	85,073	131,857	55	81,706	125,108	53	72,482	121,908	68	0.85	0.92	8.52
Irish potatoes	1,425	1,806	27	1,415	1,764	25	22,940	27,563	20	16.10	15.27	-5.21
Virginia tobacco	11,984	15,080	26	11,758	14,946	27	22,074	27,146	23	1.84	1.80	-2.27
Burley tobacco	8,618	10,122	17	8,381	9,536	14	9,809	11,141	14	1.14	1.10	-3.30
Mixed beans	85,177	71,544	(16)	81,575	68,239	(16)	65,265	47,070	(28)	0.77	0.66	-14.14
Cowpeas	6,416	2,089	(67)	6,026	1,992	(67)	2,722	1,376	(49)	0.42	0.66	55.35
Sweet potatoes	70,755	45,335	(36)	68,993	43,211	(37)	252,867	146,614	(42)	3.57	3.23	-9.51
Paprika	363	302	(17)	351	302	(14)	533	600	12	1.47	1.98	34.87
Wheat	27,192	37,637	38	27,192	37,631	38	172,256	237,336	38	6.33	6.31	-0.46
Barley	181	1,206	568	181	1,206	568	1,089	8,878	715	6.03	7.36	22.07
Popcorn	5,597	3,275	(41)	5,149	2,954	(43)	7,846	4,408	(44)	1.40	1.35	-3.97

Source: CSO/MACO 2010/2011 Crop Forecasting Survey

Expected Maize Production by Province

At provincial level, the highest production of maize is expected from Southern Province with 639,541 metric tonnes, followed by Eastern and Central provinces with 584,415 and 558,493

metric tonnes, respectively. Luapula and Western provinces are expected to record the lowest production at 124,885 and 95,524 metric tonnes, respectively.



Source: CSO/MACO 2010/2011 Crop Forecasting Survey

National Food Balance Sheet for Zambia for the 2011/2012 Agricultural Marketing Season

Based on the 2010/2011 MACO/CSO Crop Forecasting Survey and MACO/Private Sector Utilization Estimates (Metric Tonnes)									
			Maize	Paddy rice	Wheat	Sorghum & Millet	Sweet and Irish potatoes	Cassava flour	Total (maize equivalent)
A.	Availability:								
	(i) Opening stocks (1st May 2011)	1/	848,606	4,641	71,851	5,203	0	0	928,974
	(ii) Total production (2010/11)	2/	3,020,380	49,410	237,336	56,102	174,177	1,132,156	4,462,380
	Total availability		3,868,986	54,051	309,187	61,305	174,177	1,132,156	5,391,355
B.	Requirements:								
	(i) Staple food requirements:								
	Human consumption	3/	1,396,341	64,164	209,153	58,500	165,468	598,707	2,329,651
	Food Reserve Stocks (net)	4/	240,000	0	0	0	0	0	240,000
	(ii) Industrial requirements:								
	Stockfeed	5/	175,000	0	0	0	0	0	175,000
	Breweries	6/	95,000	0	0	0	0	0	95,000
	Grain retained for seed	7/	50,000	0	0	0	0	0	50,000
	(iii) Losses	8/	151,019	2,471	11,867	2,805	8,709	56,608	223,119
	(iv) Structural cross-border trade	9/	100,000						100,000
	Total requirements		2,207,360	66,634	221,020	61,305	174,177	655,315	3,212,770
C.	Surplus/deficit (A-B)	10/	1,661,626	-12,583	88,167	0	0	476,842	2,178,585
D.	Commercial imports/exports	11/	-1,661,626	12,583	-88,167	0	0	0	0
E.	Food aid import requirements	12/	0	0	0	0	0	0	0

Notes:

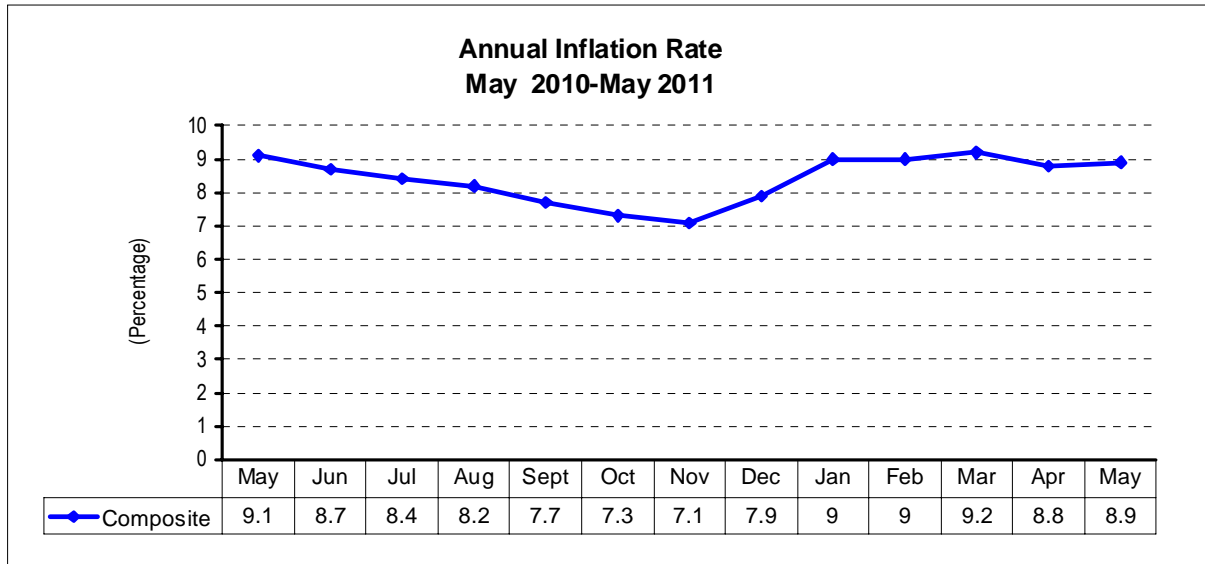
- 1/ Stocks expected to be held by commodity traders, millers, brewers, FRA, DMMU and commercial and small scale farmers as at 1st May 2011.
- 2/ Production estimates by MACO/CSO. Cassava production is based on the total area under cassava, using an annual yield figure of 11.7 tonnes per hectare (MAFF Root and Tuber Improvement Programme, 1996). A flour extraction rate of 25% is used. Other tubers are sweet potatoes and Irish potatoes.
- 3/ Human staple food consumption represents 70% (1,470 kCal/person/day, CSO) of total diet (2,100 kCal/person/day, National Food and Nutrition Commission), for the national population of 13.4 million people (CSO Census 2010).
The food balance shows an overall surplus of staple foods. Food prices may affect the level of food consumption.
- 4/ National strategic requirements expected to be carried over into the next season by FRA.
(this amount of 240,000 Mt includes equivalent quantity that is already budgeted for)
- 5/ Estimated requirements by major stock feed producers.
- 6/ Estimated requirements by industrial breweries.
- 7/ Estimated retention of grain for seed use by smallholders.
- 8/ Post harvest losses are estimated at 5% for grains, sweet potatoes and cassava, in line with estimates from other SADC countries.
- 9/ Structural exports represents cross-border trade, mostly to the DRC, that occurs on a continuing basis and that is likely to occur during the 2011/12 marketing season. It does not include large-scale formal trade.
- 10/ Expected surpluses or deficits that arise after meeting minimum overall staple human consumption requirements as well as industrial requirements.
The total surplus/deficit is expressed as maize equivalent using energy values.
The rice deficit is based on a 3 year rolling average of what is known to be imported each year, as indicated under D.
- 11/ Commercial imports/exports represent expected regional and international trade by the private sector.
- 12/ Total estimated requirement for food relief among vulnerable groups, to be imported. This could be met with maize or other grains.

INFLATION

May Inflation slightly increases to 8.9 percent

The annual rate of inflation, as measured by the all items Consumer Price Index (CPI), slightly increased to 8.9 percent in

May 2011, from 8.8 percent in April 2011. The rise in inflation is mainly attributed to increases in some food prices.



Source: CSO, Price Statistics

Changes in annual inflation rates for CPI Main Groups

Between April and May 2011, annual inflation rates increased for Food, Beverages and Tobacco; Clothing and Footwear; and Household Fuel and Lighting. The annual inflation rates

reduced for Furniture and household goods; Medical care; Transport and communication; and other goods and services.

Annual Inflation Rate: CPI Main Groups

	Total	Food Beverages & Tobacco	Clothing And Footwear	Rent Fuel & Lighting	Furniture And Household Goods	Medical care	Transport And Comms	Recreation And Education	Other Goods And Services
Jan 07 – Jan 06	9.8	1.0	34.9	15.1	16.5	24.9	22.8	15.9	11.4
Feb 07 – Feb 06	12.6	4.2	28.3	18.3	20.4	23.7	33.9	15.0	10.4
Mar 07 – Mar 06	12.7	4.9	26.9	15.8	21.6	22.1	33.5	14.9	11.0
Apr 07 – Apr 06	12.4	5.5	23.7	15.7	20.0	18.8	32.4	14.8	7.7
May 07 – May 06	11.8	5.7	18.8	17.1	19.2	16.5	28.2	10.4	7.0
Jun 07 – June 06	11.1	4.8	20.3	18.1	18.1	14.9	24.6	10.6	7.0
Jul 07 – July 06	11.2	6.7	19.4	14.9	17.4	14.0	18.2	10.0	7.7
Aug 07- Aug 06	10.7	7.9	19.6	11.6	15.2	11.6	11.8	10.0	7.5
Sep 07 – Sep 06	9.3	6.2	17.9	11.2	15.5	11.4	9.7	8.1	7.7
Oct 07 – Oct 06	9.0	5.6	14.7	11.8	16.8	10.9	10.3	7.4	6.3
Nov 07 – Nov 06	8.7	5.2	16.3	10.7	15.8	10.2	11.6	7.1	6.7
Dec 07 – Dec 06	8.9	5.9	14.2	11.2	13.4	9.1	13.6	8.2	6.9
Jan 08 – Jan 07	9.3	6.9	12.5	13.4	17.1	8.4	7.7	6.8	7.0
Feb 08 – Feb 07	9.5	9.1	11.1	12.5	16.0	8.9	0.3	9.0	8.4
Mar 08 – Mar 07	9.8	9.1	11.2	12.2	16.1	10.0	1.1	10.3	9.4
Apr 08 – Apr 07	10.1	9.8	11.1	12.7	16.3	12.2	-0.2	11.1	9.4
May 08 – May 07	10.9	11.7	10.5	12.0	14.9	12.4	0.5	11.4	9.5
Jun 08 – June 07	12.1	15.6	9.7	11.4	13.4	12.2	-3.5	10.6	10.4
Jul 08 – Jul 07	12.6	14.2	9.3	14.9	14.2	13.9	4.7	11.0	11.3

	Total	Food Beverages & Tobacco	Clothing And Footwear	Rent Fuel & Lighting	Furniture And Household Goods	Medical care	Transport And Comms	Recreation And Education	Other Goods And Services
Aug 08- Aug 07	13.2	16.3	6.3	14.5	13.3	12.9	5.3	11.2	10.7
Sep 08– Sep 07	14.2	16.2	5.6	17.7	14.8	11.8	11.5	11.5	10.4
Oct 08 – Oct 07	15.2	17.6	4.6	14.9	15.1	11.3	19.2	11.6	12.1
Nov 08 – Nov 07	15.3	18.5	2.7	14.5	16.1	10.3	16.4	12.4	12.5
Dec 08 – Dec 07	16.6	20.5	2.5	15.2	18.0	9.9	15.9	12.1	13.2
Jan 09 – Jan 08	16.0	21.3	3.0	8.9	13.8	9.2	18.3	11.7	15.2
Feb 09 – Feb 08	14.0	16.3	3.9	8.6	16.5	9.6	19.4	9.3	15.4
Mar 09 – Mar 08	13.1	13.9	5.9	10.4	16.3	10.1	19.7	7.9	15.2
Apr 09 – Apr 08	14.3	15.9	6.8	10.4	16.1	8.2	22.0	7.1	17.1
May 09 – May 08	14.7	16.1	7.9	10.7	21.2	8.0	16.6	6.0	20.0
Jun 09 – June 08	14.4	14.1	9.6	10.1	22.4	10.0	21.0	6.9	22.6
Jul 09 – Jul 08	14.0	14.9	9.9	7.9	22.1	10.2	13.0	8.9	21.6
Aug 09- Aug 08	14.3	14.6	11.4	11.7	21.7	10.3	10.4	10.1	20.6
Sep 09– Sep 08	13.0	13.9	13.6	9.9	21.4	13.3	1.3	9.7	20.5
Oct 09 – Oct 08	12.3	12.3	15.0	11.7	19.4	14.9	-3.2	12.0	24.7
Nov 09 – Nov 08	11.5	11.1	15.0	11.2	19.1	14.4	-3.1	11.0	23.6
Dec 09 – Dec 08	9.9	8.0	15.8	11.4	17.6	15.9	-3.4	10.6	26.0
Jan 10 – Jan 09	9.6	7.1	15.7	14.7	16.4	15.8	-4.0	10.5	23.0
Feb 10 – Feb 09	9.8	8.2	14.7	13.3	14.3	15.7	-1.1	9.9	21.1
Mar 10 – Mar 09	10.2	9.3	11.4	12.9	14.1	15.0	1.6	9.9	19.7
Apr 10 – Apr 09	9.2	7.3	11.4	14.4	13.0	15.0	1.6	9.8	20.2
May 10 – May 09	9.1	6.5	10.5	12.4	12.3	15.3	9.9	11.2	16.8
Jun 10 – June 09	7.8	3.8	9.9	15.7	10.1	14.4	11.1	10.8	12.8
Jul 10 – Jul 09	8.4	4.1	11.9	17.0	10.8	12.7	13.0	9.0	12.8
Aug 10- Aug 09	8.2	2.9	12.8	17.2	14.6	13.1	12.4	6.5	14.1
Sep 10– Sep 09	7.7	2.8	11.3	15.8	11.5	9.8	15.3	6.6	14.1
Oct 10 – Oct 09	7.3	3.4	9.5	15.6	11.3	8.7	12.2	4.3	10.2
Nov 10 – Nov 09	7.1	2.5	9.9	16.6	11.3	9.2	12.9	4.1	11.0
Dec 10 – Dec 09	7.9	4.4	10.0	16.4	12.9	7.6	11.2	3.5	7.6
Jan 11 – Jan10	9.0	5.2	9.3	20.8	14.0	8.3	14.0	3.2	7.7
Feb 11 – Feb 10	9.0	4.5	9.2	26.0	14.1	7.7	8.7	5.9	8.1
Mar 11 – Mar 10	9.2	3.8	12.3	28.3	12.9	8.3	6.4	10.0	8.6
Apr 11 – Apr 10	8.8	3.3	11.3	24.8	14.0	8.8	7.7	10.8	5.9
May 11 – May 10	8.9	4.2	11.9	26.5	11.6	8.7	4.5	10.8	5.4

Source: CSO, Prices Statistics

Contributions of different Items to overall inflation

Of the total 8.9 percent annual inflation in May 2011, food products accounted for 2.0 percentage points, while non-food

products in the Consumer Price Index (CPI) accounted for a total of 6.9 percentage points.

Items	Percentage Points Contributions of different items to overall inflation												
	May10	Jun10	Jul-10	Aug-10	Sept-10	Oct-10	Nov-10	Dec-10	Jan-11	Feb-11	Mar-11	Apr-11	May-11
Food Beverages and Tobacco	3.2	1.9	2.0	1.4	1.4	1.6	1.2	2.2	2.6	2.2	1.9	1.6	2.0
Clothing and Footwear	0.9	0.9	1.1	1.1	1.0	0.9	0.9	0.9	0.8	0.8	1.1	1.0	1.1
Rent and household energy	1.4	1.7	1.9	1.9	1.8	1.8	1.9	1.8	2.3	2.9	3.2	2.9	3.0
Furniture and Household Goods	1.5	1.2	1.3	1.8	1.4	1.4	1.4	1.6	1.7	1.7	1.5	1.7	1.4
Medical Care	0.2	0.1	0.1	0.1	0.1	0.1	0.1	0.1	0.1	0.1	0.1	0.1	0.1
Transport (fuel, airfares, new motor vehicles)	0.7	0.9	1.0	1.0	1.2	0.9	1.0	0.8	1.0	0.7	0.5	0.6	0.4
Recreation and Education	0.7	0.7	0.6	0.4	0.4	0.3	0.3	0.2	0.2	0.4	0.6	0.7	0.7
Other Goods and Services	0.5	0.4	0.4	0.5	0.4	0.3	0.3	0.3	0.3	0.2	0.3	0.2	0.2
All Items	9.1	7.8	8.4	8.2	7.7	7.3	7.1	7.9	9.0	9.0	9.2	8.8	8.9

Source: CSO, Prices Statistics

The Annual Food and Non- Food Inflation rates

The annual food inflation rate was recorded at 4.2 percent in May 2011. This is an increase from 3.3 percent in April 2011. Furthermore, the annual non-food

inflation rate was recorded at 13.3 percent in May 2011. This is a decrease from 14.0 percent in April 2011.

Annual Inflation Rates: Food and Non food

Period	Total	Food	Non-Food
Jan 06 – Jan 05	12.2	12.8	11.5
Feb 06 - Feb 05	10.3	10.2	10.3
Mar 06 - Mar 05	10.7	10.9	10.4
Apr 06 – Apr 05	9.4	8.3	10.6
May 06 – May 05	8.6	5.6	12.0
Jun 06 - Jun 05	8.5	5.4	11.8
Jul 06 - Jul 05	8.7	4.3	13.6
Aug 06 – Aug 05	8.0	0.4	16.4
Sep 06 – Sep 05	8.2	1.5	15.7
Oct 06 - Oct 05	7.9	1.0	15.4
Nov 06 - Nov 05	8.1	0.8	16.2
Dec06 – Dec 05	8.2	-0.2	18.1
Jan 07 - Jan 06	9.8	1.0	20.0
Feb 07 - Feb 06	12.6	4.2	22.1
Mar 07 - Mar 06	12.7	4.9	21.5
Apr 07 – Apr 06	12.4	5.5	20.1
May 07 – May 06	11.8	5.7	18.2
Jun 07 - Jun 06	11.1	4.8	17.7
Jul 07- Jul 06	11.2	6.7	15.6
Aug 07– Aug 06	10.7	7.9	13.3
Sep 07 – Sep 06	9.3	6.2	12.4
Oct 07- Oct 06	9.0	5.6	12.2
Nov 07- Nov 06	8.7	5.2	12.2
Dec07 – Dec 06	8.9	5.9	11.9
Jan 08 - Jan 07	9.3	6.9	11.7
Feb 08 - Feb 07	9.5	9.1	10.0
Mar 08 - Mar 07	9.8	9.1	10.4
Apr 08– Apr 07	10.1	9.8	10.5
May 08 – May 07	10.9	11.7	10.1
Jun 08 - Jun 07	12.1	15.6	8.8
Jul 08- Jul 07	12.6	14.2	11.2
Aug 08– Aug 07	13.2	16.3	10.4
Sep 08 – Sep 07	14.2	16.2	12.4
Oct 08- Oct 07	15.2	17.6	13.0
Nov 08- Nov 07	15.3	18.5	12.4
Dec 08 – Dec 07	16.6	20.5	12.9
Jan 09 - Jan 08	16.0	21.3	11.1
Feb 08 - Feb 07	14.0	16.3	11.7
Mar 09 - Mar 08	13.1	13.9	12.3
Apr 09– Apr 08	14.3	15.9	12.7
May 09 – May 08	14.7	16.1	13.3
Jun 09 - Jun 08	14.4	14.1	14.7
Jul 09- Jul 08	14.0	14.9	13.1
Aug 09– Aug 08	14.3	14.6	13.9
Sep 09 – Sep 08	13.0	13.9	12.1
Oct 09- Oct 08	12.3	12.3	12.3
Nov 09- Nov 08	11.5	11.1	11.9
Dec 09 – Dec 08	9.9	8.0	11.8
Jan 10 – Jan 09	9.6	7.1	12.0
Feb 10 – Feb 09	9.8	8.2	11.3
Mar 10 - Mar 09	10.2	9.3	11.0

Period	Total	Food	Non-Food
Apr 10– Apr 09	9.2	7.3	11.2
May 10 – May 09	9.1	6.5	11.6
Jun 10 - Jun 09	7.8	3.8	11.8
Jul 10- Jul 09	8.4	4.1	12.6
Aug10– Aug 09	8.2	2.9	13.4
Sep 10 – Sep 09	7.7	2.8	12.5
Oct 10 - Oct 09	7.3	3.4	11.0
Nov10- Nov 09	7.1	2.5	11.5
Dec 10– Dec 09	7.9	4.4	11.3
Jan 11 – Jan 10	9.0	5.2	12.8
Feb 11 – Feb 10	9.0	4.5	13.5
Mar 11 - Mar 10	9.2	3.8	14.5
Apr 11– Apr 10	8.8	3.3	14.0
May 11 – May 10	8.9	4.2	13.3

Source: CSO, Prices Statistics

National Average Prices of Selected Products

A comparison of retail prices between April 2011 and May 2011, shows that the national average price of a 25 kg bag of white breakfast mealie meal reduced by 3.2 percent, from K51,294 to K49,661. The average price of a 25kg bag of white roller mealie meal reduced by 2.8 percent, from K36,417 to K35,391. The national average price of a 20 litre tin of maize grain reduced by 13.6 percent, from K21,374 to K18,464.

The national average price of 1kg of dried kapenta (Mpulungu) increased by

6.0 percent, from K51,741 to K54,836, while the average price of 1kg of dried kapenta (Siavonga) increased by 3.7 percent, from K57,686 to K59,799. The national average price of 1kg of tomatoes increased by 9.0 percent, from K3,001 to K3,272. The average price of 1kg of cabbage increased by 0.9 percent, from K1,642 to K1,656. The national average price of 1kg of fresh okra increased by 13.2 percent, from K4,422 to K5,004.

National Average Prices for selected Products and Months

Product Description	2010	2011					Percentage Changes
	December	January	February	March	April	May	May -11/Apr - 11
White breakfast mealie meal 25Kg	53,187	52,605	52,305	51,867	51,294	49,661	-3.2
White Roller mealie meal 25Kg	37,386	37,408	37,778	38,048	36,417	35,391	-2.8
White Maize 20 litre tin	21,044	21,601	21,746	21,381	21,374	18,464	-13.6
Rice Local 1 Kg	7,749	7,828	7,905	7,772	7,728	7,914	2.4
Rice Imported 1 Kg	26,576	27,097	26,719	24,969	25,112	25,613	2.0
Millet 5 litre tin	11,291	11,679	13,287	13,029	13,241	12,841	-3.0
Sorghum 5 litre tin	12,777	13,226	14,007	13,428	13,496	12,855	-4.7
Cassava meal 1Kg	5,175	5,362	3,506	3,716	4,089	3,839	-6.1
Fillet Steak 1 Kg	32,945	34,644	35,702	35,397	35,847	35,503	-1.0
Mixed Cut 1 Kg	21,428	22,645	22,893	23,181	23,204	22,467	-3.2
T-bone 1 Kg	28,383	30,750	30,698	30,802	31,336	31,281	-0.2
Dressed chicken 1 Kg	17,775	17,043	17,089	17,660	17,902	17,428	-2.6
Bream Fresh/Frozen 1 Kg	15,532	16,036	16,334	15,846	15,761	15,925	1.0
Dried Kapenta Mpulungu 1 Kg	59,845	59,597	57,869	54,071	51,741	54,836	6.0
Dried Kapenta Siavonga 1 Kg	60,344	60,844	60,128	59,341	57,686	59,799	3.7
Dried Kapenta Chisense 1 Kg	36,798	37,396	34,137	36,444	34,136	36,005	5.5
Cabbage 1kg	1,554	2,030	1,793	1,634	1,642	1,656	0.9
Tomatoes 1kg	3,597	3,984	4,103	3,396	3,001	3,272	9.0
Pumpkin leaves 1kg	3,273	2,945	2,482	2,413	2,557	2,806	9.7
Sweet potato leaves 1kg	3,657	3,251	2,946	2,941	2,815	3,403	20.9

Product Description	2010	2011					Percentage Changes
	December	January	February	March	April	May	May -11/Apr - 11
Egg plant 1kg	4,464	4,265	3,455	3,690	3,471	3,749	8.0
Lettuce 1kg	4,886	4,886	7,163	6,695	8,172	9,120	11.6
Spinach 1kg	3,168	3,462	2,891	2,695	2,427	2,534	4.4
Rape 1kg	2,787	3,088	2,896	2,678	2,640	2,647	0.3
Cucumber 1kg	3,913	3,970	2,612	2,878	2,976	3,158	6.1
Fresh okra 1kg	5,786	5,952	5,445	5,022	4,422	5,004	13.2
Impwa 1kg	3,769	3,420	2,983	2,763	2,516	2,658	5.6
Green pepper 1kg	8,416	8,599	7,728	6,039	6,293	7,102	12.9
Irish potatoes 1kg	4,229	4,673	4,336	4,181	3,910	4,092	4.7
Air fare Lusaka/London British Airways 1 Way	5,280,000	5,390,000	5,500,000	5,507,600	5,467,200	5,932,800	8.5
Air Fare Lusaka/Ndola Proflight Zambia 1 way	768,000	833,000	833,000	833,000	816,000	833,000	2.1
Bed & continental Breakfast 3 to 5 star hotel	579,203	598,474	705,824	692,945	687,012	685,653	-0.2
Bed & Continental Breakfast 2 star Down to motel	145,901	135,952	122,284	131,443	139,922	138,869	-0.8
Nshima with Beef 2 Star Down to Motel	28,199	27,781	27,292	27,887	27,609	28,339	2.6

Source: CSO, Prices Statistics

INTERNATIONAL MERCHANDISE TRADE

April 2011 records Trade Surplus

Zambia recorded a trade surplus valued at K1, 105.4 billion in April 2011, representing a nominal growth of about 27.8 percent from K865.0 billion recorded in March 2011. This means that the country exported more in April 2011 than it imported, in the same month, in nominal terms.

Since January 2011, the country has had monthly trade surpluses with the highest valued at K1, 484.3 billion recorded in January and the lowest in February 2011, valued at K645.2 billion.

Total Exports (fob) and Imports (cif), January to April* 2011 (K' Millions)

Months	Imports(Cif)	Domestic Exports(fob)	Re-Exports(fob)	Total Exports(fob)	Trade Balance
January®	2,091,025	3,440,002	135,310	3,575,312	1,484,287
February®	2,372,536	2,939,608	78,096	3,017,704	645,168
March®	2,809,345	3,414,123	260,255	3,674,378	865,032
April*	2,438,607	3,262,399	281,589	3,543,988	1,105,381
Total:	9,711,513	13,056,131	755,251	13,811,382	4,099,868

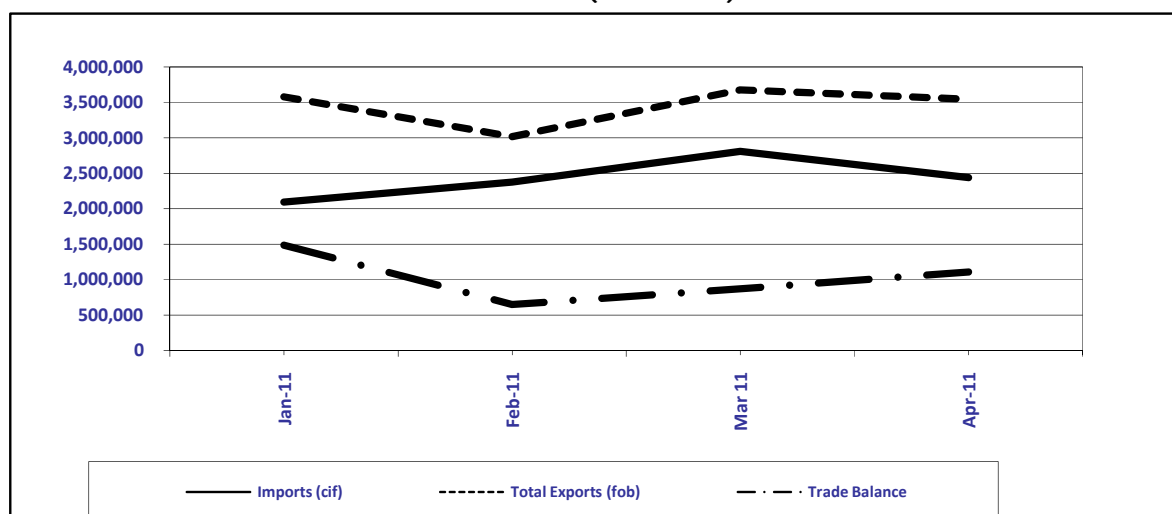
Source: CSO, International Trade Statistics, 2011

These trade data are compiled based on the General Trade System

Note: (*) Provisional

(®) Revised

Total Exports (fob), Imports (cif) and Trade Balance, January to April 2011 (K' Millions)



Source: CSO, International Trade Statistics, 2011

These trade data are compiled based on the General Trade System

Note: January 2011 to March 2011 figures have been revised, while April 2011 figures are provisional

Exports by Major Product Categories April and March 2011

Zambia's major export products in April 2011 were from the Intermediate goods category (mainly comprising copper cathodes and sections of refined copper and copper blister) accounting for about 91.4 percent. Other exports were from the Consumer goods, Raw materials and Capital goods categories; which

collectively accounted for about 8.6 percent of total exports in April 2011. This implies that between April and March 2011, the country has been a net exporter of Intermediate goods, mainly Metals and their articles, accounting for an average of 90.7 percent of the total exports.

Exports by Major Product Categories April and March 2011

Description	April 2011 *		March 2011 ®	
	Value	% Share	Value	% Share
Consumer Goods	157,690	4.4	170,075	4.6
Raw Materials	114,558	3.2	172,054	4.7
Intermediate Goods	3,237,100	91.4	3,301,599	89.9
Capital Goods	34,640	1.0	30,650	0.8
Total:	3,543,988	100.0	3,674,378	100.0

Source: CSO, International Trade Statistics, 2011

Note: (*) Provisional

(®) Revised

Zambia's Metal Exports and Non-Traditional Exports (NTEs) April and March 2011

There has been a decrease in the total value of exports from K3, 674.4 billion to K3, 544.0 billion between April and March 2011. The overall contribution of Metals and their products to the total export

earnings in April and March 2011 averaged about 86.0 percent. The share of NTEs recorded an average of about 14.1 percent in revenue earnings between April and March 2011.

Zambia's Metal Exports and Non-Traditional Exports (NTEs) April and March 2011

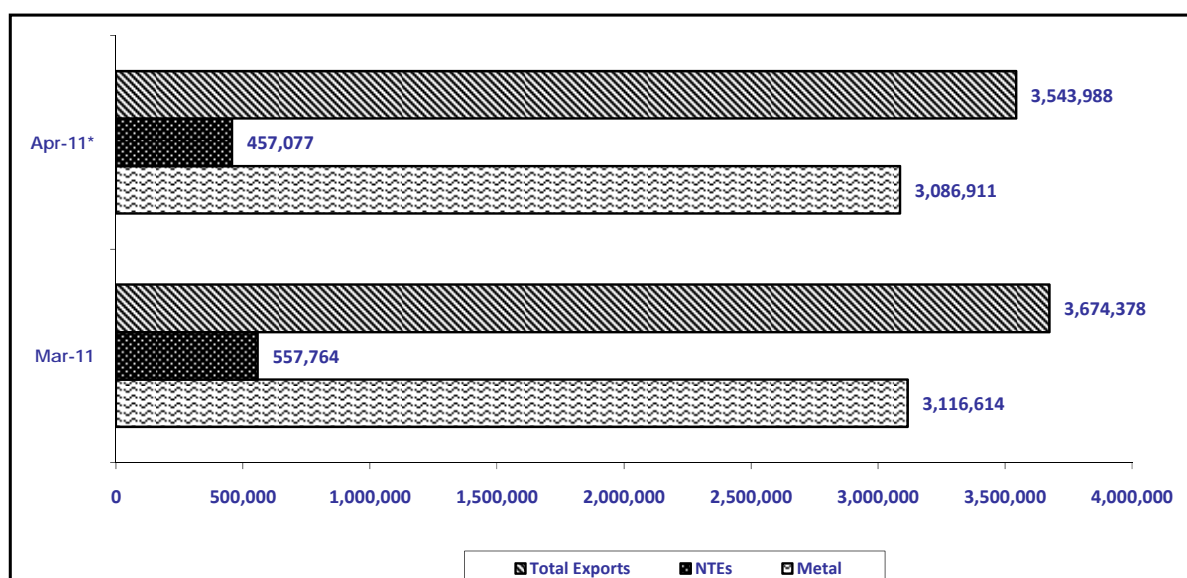
GROUP	April 2011 *		March 2011 ®	
	Value (k'million)	% Share	Value (k'million)	% Share
Traditional Exports (mainly Metals)	3,086,911	87.1	3,116,614	84.8
Non-Traditional Exports	457,077	12.9	557,764	15.2
Total Exports	3,543,988	100.0	3,674,378	100.0

Source: CSO, International Trade Statistics, 2011

Note: (*) Provisional

(®) Revised

Zambia's Metals Exports and Non-Traditional Exports (NTEs) April and March 2011, (K' Million)



Source: CSO, International Trade Statistics, 2011

Note: (*) Provisional

(®) Revised

Note that the March figures are revised while the April figures are provisional

Zambia's Major Export Destinations by Commodity in April 2011

Zambia's major export destination in April 2011 was Switzerland, which accounted for 53.6 percent. The major export products to Switzerland were; Cathodes & Sections of Cathodes of refined Copper accounting for about 79.2 percent.

China was the second major export destination of Zambia's total exports accounting for 17.7 percent. The chief export products to China were Copper blisters (45.5 percent); and Cathodes & sections of cathodes of refined copper (33.2 percent).

South Africa was the third major export destination accounting for 14.1 percent. The main export products to South Africa were Cathodes and sections of cathodes of refined copper (60.2 percent); and

other articles of Cobalt, contributing about 15.3 percent to the country's total exports.

United Kingdom was the fourth major export destination of Zambia's total exports accounting for 4.0 percent. The major export products were Cathodes & Sections of Cathodes of refined copper, accounting for about 97.7 percent.

The Democratic Republic of Congo was the fifth major export destination, accounting for 3.5 percent. The main export products were Sulphuric Acid and Wheat or Meslin flour, accounting for 12.1 and 11.0 percent, respectively.

These five countries collectively accounted for 92.9 percent of Zambia's total export earnings in April 2011.

Zambia's Five Major Export Destinations by Product for April 2011*

Country / Hs-Code	Description	April 2011 *	
		Value (K'Million)	% Share
SWITZERLAND		1,899,018	100.0
74031100	Cathodes and sections of cathodes of refined copper	1,503,968	79.2
74091900	Plates, sheets and strip, of refined copper, uncoi	195,830	10.3
74031910	Copper blister	171,860	9.0
26050000	Cobalt ores and concentrates	26,483	1.4
74091100	Plates, sheets and strip, of refined copper, in co	847	0.0
24011000	Tobacco, not stemmed/stripped	29	0.0
01019000	Other	0	0.0
01062000	Reptiles (including snakes and turtles)	0	0.0
01063900	-Birds:--other	0	0.0
01069000	Other live animals	0	0.0
Other Products		0	0.0
% of Total April Exports		53.6	
CHINA		628,239	100.0
74031910	Copper blister	285,735	45.5
74031100	Cathodes and sections of cathodes of refined copper	208,635	33.2
74032900	Copper (excl. Master) alloys, nes, unwrought	71,280	11.3
24012000	Tobacco, partly or wholly stemmed/stripped	24,842	4.0
26040000	Nickel ores and concentrates	21,468	3.4
81059000	Other: articles of cobalt, nes	12,375	2.0
26203000	Ash and residues containing mainly copper	1,946	0.3
74091100	Plates, sheets and strip, of refined copper, in co	827	0.1
71031000	Precious (excl. Diamonds) or semi-precious stones,	349	0.1
26030000	Copper ores and concentrates	238	0.0
Other Products		543	0.1
% of Total April Exports		17.7	
SOUTH AFRICA		501,322	100.0
74031100	Cathodes and sections of cathodes of refined copper	301,701	60.2
81059000	Other: articles of cobalt, nes	76,722	15.3
28220010	Cobalt oxides and hydroxides: commercial cobalt ox	42,356	8.4
74081100	Wire of refined copper, maximum cross-sectional dimension >6mm	30,143	6.0
85444900	Electric conductors, nes, for a voltage <=80 v, no	12,004	2.4
74031910	Copper blister	6,320	1.3
74040000	Copper waste and scrap	3,064	0.6

Country / Hs-Code	Description	April 2011 *	
		Value (K'Million)	% Share
74032900	Copper (excl. Master) alloys, nes, unwrought	2,924	0.6
74130000	Stranded wire, cables... Of copper, not electrical	1,855	0.4
84742000	Crushing or grinding machines for earth, stone, ores, etc	1,450	0.3
Other Products		22,783	4.5
% of Total April Exports		14.1	
UNITED KINGDOM		140,629	100.0
74031100	Cathodes and sections of cathodes of refined copper	137,331	97.7
07109000	Mixtures of vegetables, frozen	1,902	1.4
06031100	Fresh cut roses and buds	1,248	0.9
97050000	Collections and collector's pieces of zoological... Interest	67	0.0
99030000	Single consignment non commercial goods	30	0.0
12093000	Seeds of herbaceous plants, of a kind used for sowing	18	0.0
88033000	Other parts of aeroplanes or helicopters	11	0.0
90314900	Optical instruments and appliances for measuring	9	0.0
87089900	Parts and accessories, nes, for vehicles of 87.01	8	0.0
01069000	Other live animals	2	0.0
Other Products		3	0.0
% of Total April Exports		4.0	
CONGO DR		122,536	100.0
28070010	Sulphuric acid; oleum in bulk	14,882	12.1
11010000	Wheat or meslin flour	13,445	11.0
25232900	Portland cement (excl. White)	12,927	10.5
28020010	Sulphur, sublimed or precipitated; colloidal sulph	8,956	7.3
33029010	Other mixtures with basis of odoriferous subst.inc	5,860	4.8
84101300	Of a power exceeding 10,000 kw.	5,486	4.5
17011100	Raw cane sugar, in solid form	4,895	4.0
25221000	Quicklime	4,219	3.4
28321010	Sodium sulphites in bulk	3,363	2.7
84314900	Parts of machinery of 84.26, 84.29 and 84.30, nes	3,191	2.6
Other Products		45,311	37.0
% of Total April Exports		3.5	
Other Destinations		252,244	7.1
Total Value of April Exports		3,543,988	

Source: CSO, International Trade Statistics, 2011

Note: (*) Provisional

(R) Revised figures

Export Market Shares by Regional Groupings, April and March 2011

The Southern African Development Community (SADC) regional grouping was the largest market for Zambia's total exports, accounting for 21.2 percent in April 2011. Within SADC, South Africa was the dominant market in April and March 2011 with 66.8 and 60.3 percent, respectively. Congo (DR) was second in both April and March 2011 with 16.3 and 18.6 percent, respectively. Other notable markets were Zimbabwe, Malawi and Mauritius.

Asia was the second largest market for Zambia's total exports, accounting for 18.6 percent in April 2011. Within Asia, China was the dominant market in both April and March 2011 with 95.5 and 83.3 percent, respectively. The United Arab Emirates was the second dominant market in both April and March 2011 with

3.5 and 8.5 percent, respectively. Other prominent markets were India, Hong Kong and Japan.

The Common Market for Eastern and Southern Africa (COMESA) grouping of countries was the third largest market for Zambia's total exports accounting for 6.9 percent. Within COMESA, Congo (DR) was the dominant market in both months with 50.3 percent in April 2011 and 48.9 percent in March 2011. Zimbabwe was the second dominant market in both April and March 2011 with 25.2 and 28.1 percent, respectively. Other notable markets were Malawi, Mauritius and Kenya.

The European Union (EU) was the fourth largest market for Zambia's total exports accounting for 5.8 percent in April 2011. Within the EU, the United Kingdom was

the dominant market in both months with 68.8 and 47.5 percent in April and March 2011. Belgium was the second with 17.5 and 40.0 percent in April and March

2011, respectively. Other notable markets were Luxembourg, Netherlands and Germany.

Export Market Shares by Regional Groupings, April and March 2011 (K' Millions)

GROUPING	April 2011 *		GROUPING	March 2011 ®	
	Value (K'Million)	% Share		Value (K'Million)	% Share
SADC	750,317	100.0	SADC	725,107	100.0
South Africa	501,322	66.8	South Africa	437,230	60.3
Congo DR	122,536	16.3	Congo DR	134,653	18.6
Zimbabwe	61,501	8.2	Zimbabwe	77,422	10.7
Mauritius	17,678	2.4	Mauritius	16,891	2.3
Malawi	13,631	1.8	Malawi	16,670	2.3
Other SADC	33,648	4.5	Other SADC	42,241	5.8
% of Total April Exports	21.2		% of Total March Exports	19.7	
ASIA	657,703	100.0	ASIA	633,738	100.0
China	628,239	95.5	China	527,919	83.3
United Arab Emirates	23,059	3.5	United Arab Emirates	54,112	8.5
India	5,538	0.8	India	30,244	4.8
Hong Kong	401	0.1	Japan	17,605	2.8
Japan	176	0.0	Singapore	3,076	0.5
Other ASIA	289	0.0	Other ASIA	782	0.1
% of Total April Exports	18.6		% of Total March Exports	17.2	
COMESA	243,764	100.0	COMESA	275,171	100.0
Congo DR	122,536	50.3	Congo DR	134,653	48.9
Zimbabwe	61,501	25.2	Zimbabwe	77,422	28.1
Mauritius	17,678	7.3	Mauritius	16,891	6.1
Kenya	14,857	6.1	Malawi	16,670	6.1
Malawi	13,631	5.6	Burundi	14,443	5.2
Other COMESA	13,560	5.6	Other COMESA	15,091	5.5
% of Total April Exports	6.9		% of Total March Exports	7.5	
EUROPEAN UNION	204,294	100.0	EUROPEAN UNION	118,778	100.0
United Kingdom	140,629	68.8	United Kingdom	56,427	47.5
Belgium	35,742	17.5	Belgium	47,523	40.0
Luxembourg	19,004	9.3	Sweden	6,467	5.4
Germany	4,166	2.0	Netherlands	4,180	3.5
Netherlands	3,223	1.6	Germany	3,325	2.8
Other EU	1,530	0.7	Other EU	856	0.7
% of Total April Exports	5.8		% of Total March Exports	3.2	
Total Value of April Exports	3,543,988		Total Value of March Exports	3,674,378	

Source: CSO, International Trade Statistics, 2011

Note: (*) Provisional

(R) Revised figures

Imports by Major Product Categories, April and March 2011

Zambia's major import products by category in April 2011 were from the Raw materials category, accounting for 30.9 percent. The Capital goods category was second with 28.0 percent, while the Intermediate goods category was third with 27.2 percent. Consumer goods

category was fourth with 13.9 percent. This means that between April and March 2011, the country has been a net importer of Raw materials, contributing an average of 32.0 percent to total imports.

Imports (cif) by Major Product Categories April and March 2011, (K' Millions)

Description	April 2011 *		March 2011 ®	
	Value	% Share	Value	% Share
Consumer Goods	338,072	13.9	348,159	12.4
Raw Materials	754,672	30.9	926,615	33.0
Intermediate Goods	663,516	27.2	791,613	28.2
Capital Goods	682,346	28.0	742,958	26.4
Total:	2,438,607	100.0	2,809,345	100.0

Source: CSO, International Trade Statistics, 2011

Note: (*) Provisional

(R) Revised figures

Zambia's Major Import Sources by Commodity, April 2011

The major source of Zambia's imports in April 2011 was South Africa, accounting for 35.2 percent. The major import products from South Africa were Urea and Parts of machinery of 84.26, 84.29 and 84.30, contributing 2.4 percent each to the share of imports.

The second main source of Zambia's imports in April 2011 was Congo (DR) accounting for 24.9 percent of the total

value of imports. The major import products were sorting, screening, separating or washing machines for earth, stone accounting for 8.2 percent.

Other sources of Zambia's imports were China, The United Arab Emirates and India, collectively accounting for 13.3 percent of Zambia's total imports in April 2011.

Zambia's Major Import Sources by Products, April 2011* (K' Millions)

Country / Hs-Code	Description	April 2011 *	
		Value (K'Million)	% Share
SOUTH AFRICA		858,977	100.0
31021000	Urea	20,924	2.4
84314900	Parts of machinery of 84.26, 84.29 and 84.30, nes	20,264	2.4
84749000	Parts of machinery of 84.74	13,425	1.6
87042110	Diesel dual purpose vehicles for both persons & go	12,477	1.5
84139100	Parts of pumps for liquids	11,466	1.3
27101950	Cutting oil,grease cutting oils,cleaning oils etc.	11,445	1.3
87042190	Diesel non dual purpose vehicles for either person	10,790	1.3
72104900	Flatrolled iron/steel,wid.>=600mm,zinc plated/coat	10,778	1.3
31059000	Other fertilizers, nes	10,752	1.3
31023000	Ammonium nitrate	10,745	1.3
Other Products		725,910	84.5
% of Total April Imports		35.2	
CONGO DR		607,752	100.0
84741000	Sorting, screening, separating or washing machines for earth, stone...	13,128	8.2
73089090	Structures and parts of structures, nes, of iron o	12,680	7.9
90011000	Optical fibres, optical fibre bundles and cables (excl. Those of 84.55)	8,962	5.6
84264100	Derricks, cranes, etc., nes, self-propelled, on tyr	8,680	5.4
85171200	Telephones for cellular networks or for other wireless networks	5,634	3.5
87042300	Goods vehicles, with diesel or semi-diesel engines	5,205	3.2
84212900	Machinery and apparatus for filtering/purifying li	4,672	2.9
84748000	Other machinery for earth, stone, ores, etc., nes	4,114	2.6
76141000	Cables... Of aluminum, with steel core, not elect	2,965	1.8
84742000	Crushing or grinding machines for earth, stone, ores, etc	2,429	1.5
Other Products		92,083	57.4
% of Total April Imports		24.9	
CHINA		132,411	100
84295200	Self-propelled bulldozers... With a 360x revolving	20,116	15.2
73089090	Structures and parts of structures, nes, of iron o	8,984	6.8
90011000	Optical fibres, optical fibre bundles and cables (excl. Those of 84.55)	6,657	5.0
72142090	Iron/steel bars & rods,hotrolled,twiste/with deformtns from rolling proc. - other	6,229	4.7

Country / Hs-Code	Description	April 2011 *	
		Value (K'Million)	% Share
84314900	Parts of machinery of 84.26, 84.29 and 84.30, nes	5,768	4.4
72179000	Wire of iron or non-alloy steel, nes	4,154	3.1
73063000	Tubes and pipes, welded, circular, of iron or non-	3,408	2.6
40111000	New pneumatic tyres, of rubber of a kind used on m	3,375	2.5
85171100	Line telephone sets with cordless handsets	2,687	2.2
72163300	H sections of iron/steel, hot-rolled..., >=80mm high	2,629	2.2
Other Products		68,402	51.7
% of Total April Imports		5.4	
UNITED ARAB EMIRATES		106,519	100.0
31021000	Urea	18,878	17.7
31022900	Double salts and mixtures of ammonium sulphate and	14,224	13.4
84381000	Bakery machinery and machinery for making macaroni, spaghetti, etc	13,855	13.0
28080010	Nitric acid; sulphonitric acids in bulk	9,433	8.9
31052000	Mineral or chemical fertilizers with nitrogen, pho	5,348	5.0
85271900	Radio receivers, portable, (excl. sound recording/re	2,962	2.8
27141000	Bituminous or oil shale and tar sands	2,857	2.7
85287200	Reception apparatus for tv...other, colour	2,278	2.1
84099990	Other: parts for compression-ignition internal com	2,265	2.1
73129000	Plaited bands, slings, etc., of iron or steel, not	1,433	1.3
Other Products		32,985	31.0
% of Total April Imports		4.4	
INDIA		85,349	100.0
30049000	Other medicaments of mixed or unmixed products, fo	21,096	24.7
30065000	First-aid boxes and kits	8,621	10.1
63090000	Worn clothing and other worn articles	2,923	3.4
39206310	Plates..., of unsaturated polyesters, not reinforc	2,827	3.3
87052000	Mobile drilling derricks	2,632	3.1
84773000	Blow moulding machines for working rubber or plastics, etc	2,333	2.7
85044000	Static converters	2,113	2.5
30022000	Vaccines for human medicine	1,659	1.9
84818000	Other appliances such as taps, cocks and other val	1,391	1.6
29309010	Other organo-sulphur compounds, nes - in bulk	1,391	1.6
Other Products		32,603	38.2
% of Total April Imports		3.5	
Other Destination		647,598	26.6
Total Value of April Imports		2,438,607	

Source: CSO, International Trade Statistics, 2011

Note: (*) Provisional

(R) Revised figures

Import Market Shares by Regional Groupings, April and March 2011

The Southern African Development Community (SADC) regional grouping was the largest source of Zambia's imports accounting for 64.6 percent in April 2011. Within the SADC regional grouping, South Africa was the major source of Zambia's imports with 54.5 percent in April 2011 and 48.6 percent in March 2011. Congo (DR) was the second major source of Zambia's imports with 38.6 and 46.6 percent in April and March 2011, respectively. Other notable markets were Zimbabwe, Tanzania, and Botswana.

The Common Market for Eastern and Southern Africa (COMESA) grouping of countries was the second largest source of Zambia's imports accounting for 28.4 percent in April 2011. Within COMESA, Congo (DR) was the main source of Zambia's imports in both April and March 2011 with an average of 87.5 percent. Other prominent sources were Zimbabwe, Kenya and Malawi.

Asia was the third largest source of Zambia's imports accounting for 26.4 percent in April 2011. Within Asia, China was the dominant source of Zambia's imports in both April and March 2011 with 26.4 and 24.5 percent, respectively. Other notable markets were United Arab Emirates, Japan, Kuwait and India.

The European Union (EU) was the fourth largest source of Zambia's imports accounting for 8.7 percent in April 2011. Within the EU, the United Kingdom was the major source of Zambia's imports accounting for 30.3 and 35.1 percent in April and March 2011, respectively. Other notable markets were Netherlands, Finland, Germany and Sweden.

Import Market shares by Major Regional Groupings, April and March 2011, K' Millions

GROUPING	April 2011 *		GROUPING	March 2011 ®	
	Value (K'Million)	% Share		Value (K'Million)	% Share
SADC	1,576,239	100.0	SADC	1,808,998	100.0
South Africa	858,977	54.5	South Africa	880,009	48.6
Congo DR	607,752	38.6	Congo DR	842,391	46.6
Botswana	38,774	2.5	Zimbabwe	34,116	1.9
Zimbabwe	29,255	1.9	Tanzania, United	17,052	0.9
Tanzania, United	23,042	1.5	Botswana	7,318	0.4
Other SADC	18,439	1.2	Other SADC	28,111	1.6
% of Total April Imports	64.6		% of Total March Imports	64.4	
COMESA	692,737	100.0	COMESA	964,153	100.0
Congo DR	607,752	87.7	Congo DR	842,391	87.4
Kenya	40,199	5.8	Kenya	53,566	5.6
Zimbabwe	29,255	4.2	Zimbabwe	34,116	3.5
Malawi	5,399	0.8	Egypt	14,778	1.5
Egypt	4,772	0.7	Malawi	7,064	0.7
Other COMESA	5,360	0.8	Other COMESA	12,238	1.3
% of Total April Imports	28.4		% of Total March Imports	34.3	
ASIA	501,097	100	ASIA	659,763	100
China	132,411	26.4	China	161,328	24.5
United Arab Emirates	106,519	21.3	Japan	149,748	22.7
India	85,349	17.0	United Arab Emirates	115,092	17.4
Kuwait	55,375	11.1	Kuwait	67,594	10.2
Japan	49,460	9.9	India	66,191	10.0
Other ASIA	71,982	14.4	Other ASIA	99,810	15.1
% of Total April Imports	20.5		% of Total March Imports	23.5	
EUROPEAN UNION	211,511	100.0	EUROPEAN UNION	203,907	100.0
United Kingdom	63,982	30.3	United Kingdom	71,518	35.1
Netherlands	31,630	15.0	Germany	25,823	12.7
Finland	27,430	13.0	Sweden	23,269	11.4
Sweden	22,314	10.5	Netherlands	16,291	8.0
Ireland	16,615	7.9	Ireland	16,026	7.9
Other EU	49,539	23.4	Other EU	50,980	25.0
% of Total April Imports	8.7		% of Total March Imports	7.3	
Total Value of April Imports	2,438,607		Total Value of March Imports	2,809,345	

Source: CSO, International Trade Statistics, 2011

Note: (*) Provisional

(R) Revised figures

SELECTED SOCIO-ECONOMIC INDICATORS

PROJECTED MID-YEAR POPULATION 2000-2010

	2000	2001	2002	2003	2004	2005	2006	2007	2008	2009	2010*
<i>Total Population</i>	9,885,591	10,089,492	10,409,441	10,744,380	11,089,691	11,441,461	11,798,678	12,160,516	12,525,791	12,896,830	13,046,508
<i>Population Growth Rate</i>	2.5	3.1	3.1	3.1	3.1	3.1	3	3	2.9	2.9	2.8
<i>Life Expectancy at Birth</i>	50	51.8	51.9	52.4	52.4	52.6	51.9	51.4	51.3	51.2	51.3
POPULATION BY PROVINCE											
<i>Central</i>	1,012,257	1,032,574	1,066,992	1,103,387	1,141,256	1,180,124	1,219,980	1,260,491	1,301,776	1,343,835	1,267,803
<i>Copperbelt</i>	1,581,221	1,611,569	1,662,155	1,714,225	1,767,165	1,820,443	1,874,081	1,927,576	1,980,824	2,034,012	1,958,623
<i>Eastern</i>	1,306,173	1,348,070	1,391,690	1,436,120	1,482,290	1,530,118	1,579,960	1,631,890	1,684,910	1,740,180	1,707,731
<i>Luapula</i>	775,353	791,067	817,326	845,076	873,969	903,746	934,317	965,605	997,579	1,030,572	958,976
<i>Lusaka</i>	1,391,329	1,413,010	1,453,690	1,495,730	1,538,000	1,579,769	1,620,730	1,660,070	1,697,730	1,733,830	2,198,996
<i>Northern</i>	1,258,696	1,277,250	1,315,650	1,357,540	1,401,340	1,445,730	1,490,330	1,534,170	1,577,310	1,619,980	1,759,600
<i>North-western</i>	583,350	596,010	616,496	638,004	660,322	683,367	707,074	731,351	756,261	781,800	706,462
<i>Southern</i>	1,212,124	1,235,134	1,275,470	1,318,161	1,362,382	1,407,433	1,453,324	1,499,462	1,545,880	1,592,864	1,606,793
<i>Western</i>	765,088	774,929	795,247	816,983	839,757	863,294	887,540	912,226	937,419	963,107	881,524

Source: CSO, Population Projections Report

Note: 2000 figures are from the 2000 Census of Population and Housing while the 2001 to 2009 figures are Population Projections from the Projections Report. The 2010 figures are from 2010 Census of Population and Housing Preliminary Report.

GROSS DOMESTIC PRODUCT (GDP), GROWTH RATES 2001-2010

KIND OF ECONOMIC ACTIVITY	2006	2007	2008	2009	2010**	2010*
Agriculture, Forestry and Fishing	2.2	0.4	2.6	7.2	6.6	6.6
Agriculture	3.0	(2.7)	1.9	12.4	12.9	13.6
Forestry	1.4	3.7	3.7	3.7	0.6	3.7
Fishing	1.8	1.8	1.8	1.8	1.8	(7.0)
Mining and Quarrying	7.3	3.6	2.5	20.3	16.8	15.2
Metal Mining	9.0	4.4	2.5	19.7	17.6	16.0
Other mining and quarrying	(45.8)	(45.5)	(3.5)	99.6	(48.5)	(48.7)
<i>PRIMARY SECTOR</i>	4.1	1.7	2.5	12.4	10.9	10.2
Manufacturing	5.7	3.0	1.8	2.2	4.4	4.1
Food, Beverages and Tobacco	8.9	7.6	3.0	4.9	7.5	6.2
Textile, and leather industries	(1.3)	(19.5)	(23.6)	(20.0)	(31.9)	(39.2)
Wood and wood products	0.7	3.7	12.1	2.6	0.7	12.3
Paper and Paper products	0.3	0.7	29.3	6.2	22.8	21.1
Chemicals, rubber and plastic products	4.6	4.2	5.2	(0.3)	(0.2)	0.3
Non-metallic mineral products	(5.2)	2.3	5.0	11.7	10.9	12.1
Basic metal products	1.9	(4.8)	23.0	(4.8)	4.9	(0.2)
Fabricated metal products	5.0	7.8	(2.5)	(3.4)	8.9	12.9
Electricity, Gas and Water	10.5	1.0	(1.2)	6.8	4.7	7.4
Construction	14.4	20.0	8.7	9.5	7.2	8.1
<i>SECONDARY SECTOR</i>	9.8	10.0	4.7	6.2	5.8	6.4
Wholesale and Retail Trade	2.0	2.4	2.7	2.3	4.3	4.3
Restaurants, Bars and Hotels	16.1	9.6	5.0	(13.4)	10.3	9.6
Transport, Storage and Communications	22.1	19.2	15.8	7.6	14.9	14.9
Rail Transport	(2.6)	(18.7)	(20.2)	(23.8)	18.9	13.1
Road Transport	6.4	6.4	13.2	13.3	5.8	6.3
Air Transport	33.5	24.1	13.7	(23.4)	17.3	19.1
Communications	40.5	33.6	21.1	19.4	20.7	20.0
Financial Institutions and Insurance	4.0	4.1	8.7	5.2	3.9	6.0
Real Estate and Business services	3.2	3.1	3.0	2.8	3.0	3.0
Community, Social and Personal Services	9.0	12.5	11.7	8.6	1.5	5.3
Public Administration & Defence/Public sanitary services	(8.7)	14.8	2.2	0.4	(2.1)	(3.1)
Education	35.3	13.6	19.6	15.2	4.1	11.8
Health	5.2	1.0	18.3	7.7	7.2	7.2
Recreation, Religious, Culture	22.8	9.3	26.7	17.7	(3.1)	5.0
Personal Services	3.5	3.5	3.5	3.5	3.5	3.5
<i>TERTIARY SECTOR</i>	6.7	7.1	7.2	3.9	5.7	6.6
Less: FISIM	2.5	2.5	2.5	3.3	2.4	2.3
TOTAL GROSS VALUE ADDED	7.0	6.7	5.7	6.4	7.1	7.6
Taxes less subsidies on Products	(3.1)	(0.3)	5.7	6.4	7.1	7.6
TOTAL G.D.P. AT MARKET PRICES	6.2	6.2	5.7	6.4	7.1	7.6

Note :(**) Preliminary Figures

QUARTERLY INDEX OF INDUSTRIAL PRODUCTION – ZAMBIA

PERIOD	TOTAL INDEX	MINING				MANUFACTURING									TOTAL ELECTRICITY
		TOTAL MINING	Coal	Non-ferrous Ore	Stone Quarrying	TOTAL MANUFACTURING	Food, Beverages & Tobacco	Textile, Clothing & Leather	Wood & Wood Products	Paper & Paper Products	Chemicals, Rubbers & Plastics	Non-metallic Mineral Products	Basic Metal Industries	Fabricated Metal Products	
WEIGHT	1.000	0.350	0.005	0.242	0.103	0.511	0.235	0.060	0.006	0.017	0.059	0.025	0.009	0.100	0.139
2008 Q1	159.0	243.1	7.4	227.8	289.4	113.5	131.9	54.8	205.3	107.4	134.2	125.4	80.2	88.8	114.6
2008 Q2	158.1	219.5	0.1	197.0	281.9	125.3	169.0	37.3	216.8	123.1	98.2	152.7	86.6	82.5	124.1
2008 Q3	163.5	217.9	0.0	196.2	278.3	137.8	189.5	21.7	159.5	88.4	95.0	155.1	84.8	118.3	121.8
2008 Q4	164.0	209.8	0.0	196.8	249.6	142.5	196.2	48.5	167.2	135.2	77.6	164.2	68.9	112.0	127.8
2008	161.2	222.5	1.9	204.4	274.8	129.8	171.6	40.6	187.2	113.5	101.3	149.3	80.1	100.4	122.1
2009 Q1	169.0	266.3	0.0	251.4	312.8	111.6	136.9	45.5	219.4	112.5	137.1	136.7	82.1	66.5	134.9
2009 Q2	169.8	247.3	83.1	229.0	297.3	127.0	177.2	29.2	230.3	132.1	98.9	166.6	84.9	70.6	132.8
2009 Q3	170.7	232.3	48.6	208.3	296.6	138.8	196.7	15.2	162.2	96.7	85.9	178.8	76.9	109.0	133.0
2009 Q4	174.4	228.2	0.0	208.0	285.9	150.0	210.5	40.1	156.2	138.0	80.8	182.9	61.0	116.0	128.7
2009	171.0	243.5	32.9	224.2	298.1	131.8	180.3	32.5	192.1	119.8	100.7	166.2	76.2	90.5	132.4
2010 Q1	180.2	287.0	0.0	272.7	333.4	117.3	146.0	27.2	248.2	136.4	136.8	150.8	80.3	75.8	142.4
2010 Q2	186.9	273.4	0.0	261.7	312.9	138.6	193.6	23.3	261.2	171.5	99.0	189.8	84.8	80.6	147.2
*2010 Q3	188.9	272.4	0.0	261.9	308.9	144.4	202.9	4.1	177.9	105.4	87.1	199.6	78.4	121.4	142.5
YEAR-ON-YEAR PERCENTAGE CHANGES															
2008 Q1	8.5	17.5	(12.8)	15.8	20.7	3.3	2.2	(10.2)	16.4	16.3	15.2	6.5	24.3	(2.4)	(11.5)
2008 Q2	3.2	3.8	(99.0)	(1.7)	14.4	3.7	4.2	(12.1)	26.4	32.8	2.9	3.0	41.8	(3.5)	(0.8)
2008 Q3	5.5	8.7	(99.8)	(6.7)	49.5	3.0	6.3	(34.4)	(3.1)	27.6	(1.2)	1.1	26.2	(2.5)	2.0
2008 Q4	2.8	7.1	(99.9)	2.8	16.4	(0.9)	(0.5)	(35.8)	7.7	39.5	7.8	9.7	1.6	(1.8)	1.3
2008	4.9	9.3	(77.4)	2.4	23.9	2.2	3.0	(23.5)	12.1	29.3	6.6	5.0	23.0	(2.5)	(2.4)
2009 Q1	6.3	9.5	(99.9)	10.4	8.1	(1.7)	3.8	(17.0)	6.9	4.7	2.1	9.0	2.3	(25.1)	17.7
2009 Q2	7.5	12.7	82990.9	16.2	5.5	1.3	4.8	(21.7)	6.2	7.3	0.6	9.1	(1.9)	(14.4)	7.0
2009 Q3	4.3	6.6	441336.4	6.2	6.6	0.7	3.8	(29.8)	1.7	9.4	(9.6)	15.3	(9.2)	(7.8)	9.1
2009 Q4	6.3	8.8	0.0	5.7	14.6	5.3	7.3	(17.5)	(6.6)	2.1	4.1	11.4	(11.4)	3.6	0.6
2009	6.1	9.4	1648.9	9.7	8.5	1.6	5.0	(19.9)	2.6	5.6	(0.6)	11.3	(4.8)	(9.8)	8.4
2010 Q1	6.6	7.8	(100.0)	8.5	6.6	5.1	6.6	(40.2)	13.1	21.2	(0.2)	10.3	(2.1)	14.1	5.6
2010 Q2	10.1	10.6	(100.0)	14.2	5.3	9.2	9.2	(20.1)	13.4	29.8	0.1	14.0	(0.2)	14.2	10.8
*2010 Q3	10.7	6.1	(100.0)	25.7	4.2	4.1	3.2	(72.9)	9.7	9.0	1.3	11.6	1.8	11.3	7.2

Source: CSO, IIP Statistics

PRELIMINARY POPULATION DISTRIBUTION BY DISTRICT AND RESIDENCE, ZAMBIA 2010			
District	RURAL TOTAL	URBAN TOTAL	DISTRICT TOTAL
Chibombo	291,288	2,477	293,765
Kabwe	.	202,914	202,914
Kapiri-Mposhi	197,754	43,087	240,841
Mkushi	132,162	19,641	151,803
Mumbwa	196,081	22,247	218,328
Serenje	142,652	17,500	160,152
CENTRAL PROVINCE TOTAL	959,937	307,866	1,267,803
Chililabombwe	14,783	75,747	90,530
Chingola	30,415	179,658	210,073
Kalulushi	23,104	73,102	96,206
Kitwe	17,896	504,196	522,092
Luanshya	23,345	129,772	153,117
Lufwanyama	75,542	.	75,542
Masaiti	102,503	.	102,503
Mpongwe	91,765	.	91,765
Mufulira	11,285	150,316	161,601
Ndola	.	455,194	455,194
COPPERBELT PROVINCE TOTAL	390,638	1,567,985	1,958,623
Chadiza	101,505	2,750	104,255
Chama	93,761	7,651	101,412
Chipata	339,257	113,171	452,428
Katete	227,596	13,222	240,818
Lundazi	298,264	16,017	314,281
Mambwe	71,074	.	71,074
Nyimba	77,643	8,041	85,684
Petauke	311,746	26,033	337,779
EASTERN PROVINCE TOTAL	1,520,846	186,885	1,707,731
Chiengi	109,147	.	109,147
Kawambwa	100,420	30,260	130,680
Mansa	143,465	74,138	217,603
Milenge	43,649	.	43,649
Mwense	98,292	19,698	117,990
Nchelenge	113,004	34,923	147,927
Samfya	171,662	20,318	191,980
LUAPULA PROVINCE TOTAL	779,639	179,337	958,976
Chongwe	175,418	12,551	187,969
Kafue	134,641	108,113	242,754
Luangwa	20,082	5,212	25,294
Lusaka	.	1,742,979	1,742,979
LUSAKA PROVINCE TOTAL	330,141	1,868,855	2,198,996
Chilubi	76,911	.	76,911
Chinsali	130,726	17,119	147,845
Isoka	146,782	17,628	164,410
Kaputa	104,444	9,041	113,485
Kasama	124,256	113,779	238,035
Luwingu	120,229	14,197	134,426
Mbala	188,143	25,111	213,254
Mpika	171,788	39,637	211,425
Mporokoso	85,054	15,879	100,933
Mpulungu	70,274	26,048	96,322
Mungwi	137,876	6,661	144,537
Nakonde	76,634	41,383	118,017
NORTHERN PROVINCE TOTAL	1,433,117	326,483	1,759,600

PRELIMINARY POPULATION DISTRIBUTION BY DISTRICT AND RESIDENCE, ZAMBIA 2010			
District	RURAL TOTAL	URBAN TOTAL	DISTRICT TOTAL
Chavuma	33,893	.	33,893
Kabompo	69,279	21,881	91,160
Kasempa	64,557	1,173	65,730
Mufumbwe	55,099	.	55,099
Mwinilunga	117,078	15,610	132,688
Solwezi	152,119	86,932	239,051
Zambezi	78,632	10,209	88,841
NORTH-WESTERN PROVINCE TOTAL	570,657	135,805	706,462
Choma	186,793	57,387	244,180
Gwembe	51,290	1,421	52,711
Itezhi-tezhi	52,391	12,202	64,593
Kalomo	235,401	18,810	254,211
Kazungula	98,292	.	98,292
Livingstone	5,137	136,897	142,034
Mazabuka	178,962	82,306	261,268
Monze	155,045	40,876	195,921
Namwala	94,931	6,658	101,589
Siavonga	64,514	25,273	89,787
Sinazongwe	92,389	9,818	102,207
SOUTHERN PROVINCE TOTAL	1,215,145	391,648	1,606,793
Kalabo	132,298	670	132,968
Kaoma	162,347	16,979	179,326
Lukulu	73,242	10,660	83,902
Mongu	128,905	49,549	178,454
Senanga	113,395	13,579	126,974
Sesheke	82,679	11,933	94,612
Shang'ombo	85,288	.	85,288
WESTERN PROVINCE TOTAL	778,154	103,370	881,524
ZAMBIA TOTAL			13,046,508

SOURCE: CSO, 2010 Census of Population and Housing Preliminary Results

INFLATION TRENDS 2000-2009

Year	Year on Year Inflation
1990	110.6
1991	99.7
1992	180.7
1993	128.1
1994	38.3
1995	46.0
1996	35.2
1997	18.6
1998	30.6
1999	20.6
2000	30.1
2001	18.7
2002	26.7
2003	17.2
2004	17.5
2005	15.9
2006	8.2
2007	8.9
2008	16.6
2009	9.9
2010	7.9

Source: CSO, Prices Statistics

Interest Rates

End of Period	COMMERCIAL BANKS		CENTRAL BANK	TREASURY BILLS
	Weighted Lending Rates	Lending Rates	Interest Rates	YIELD RATE 91 DAYS
1990	-	-	34.0	-
1991	-	-	47.0	-
1992	-	-	54.0	-
1993	-	-	72.0	-
1994	36.2	-	25.4	-
1995	47.7	-	51.5	-
1996	57.4	69.0	70.0	-
1997	37.9	49.3	23.3	-
1998	37.4	37.0	43.4	-
1999	42.6	40.4	46.2	-
2000	37.6	45.9	44.1	-
2001	46.7	54.6	52.5	-
2002	42.5	50.0	34.0	-
2003	38.0	45.3	21.3	-
2004 MAR	31.8	39.1	9.6	-
Jun	29.8	36.9	7.8	-
Sep	30.0	37.4	14.7	-
Dec	29.8	37.1	18.3	-
2005 JAN	28.0	35.3	18.4	-
Feb	28.6	35.9	18.8	-
Mar	28.1	35.4	18.2	-
Apr	28.0	35.1	17.8	-
May	28.1	35.1	16.0	-
Jun	28.6	35.6	15.9	-
Jul	28.2	35.2	16.5	-
Aug	28.3	35.3	16.4	-
Sep	28.2	34.9	16.9	-
Oct	28.2	34.5	16.9	-
Nov	28.2	34.5	17.4	-
Dec	27.6	33.9	17.1	-
2006 JAN	26.7	33.0	17.1	15.1
Feb	26.4	32.7	16.1	14.1
Mar	25.4	31.6	14.7	12.7
Apr	25.2	31.4	11.0	9.0
May	22.8	29.0	8.4	6.4
Jun	21.6	27.8	7.5	5.5
Jul	21.7	27.9	8.6	6.6
Aug	21.7	27.9	9.6	7.6
Sep	21.6	27.8	10.9	8.6
Oct	21.6	27.8	12.3	10.3
Nov	21.6	27.8	11.1	9.1
Dec	21.6	27.9	10.7	8.7
2007 JAN	21.0	27.3	11.1	9.1
Feb	21.0	27.3	11.8	9.8
Mar	20.3	26.4	12.8	10.8
Apr	18.2	24.3	14.0	12.0
May	18.2	24.3	13.2	11.2
Jun	18.2	24.3	12.9	10.9
Jul	18.2	24.3	13.6	11.6
Aug	18.2	24.3	13.4	11.4
Sep	18.2	24.3	14.0	12.0
Oct	18.2	24.3	13.5	11.5
Nov	18.2	24.3	12.8	10.8
Dec	18.3	24.4	13.5	11.5
2008 JAN	18.4	24.5	13.2	11.2
Feb	18.3	24.4	12.6	10.6
Mar	18.2	24.3	12.9	10.9
Apr	18.2	24.3	13.0	11.0
May	18.2	24.3	14.1	12.1
Jun	18.5	24.6	14.1	12.1
Jul	18.6	24.7	14.1	12.1
Aug	18.6	24.7	14.3	12.3
Sep	19.6	25.7	14.5	12.5

End of Period	COMMERCIAL BANKS		CENTRAL BANK	TREASURY BILLS
	Weighted Lending Rates	Lending Rates	Interest Rates	YIELD RATE 91 DAYS
Oct	20.6	26.7	15.3	13.3
Nov	20.6	26.7	12.0	13.9
Dec	20.8	26.9	15.9	13.9
2009				
JAN	20.9	27.0	15.8	13.8
Feb	20.9	27.0	16.3	14.3
Mar	20.9	27.0	16.0	14.0
Apr	20.7	26.6	16.2	14.2
May	21.6	27.8	15.9	13.9
Jun	22.4	28.9	15.6	13.6
Jul	22.4	28.9	17.1	15.1
Aug	23.0	29.5	18.1	16.1
Sep	23.1	29.6	17.5	15.5
Oct	23.1	29.6	16.6	14.6
Nov				
Dec				

Source: Bank of Zambia

ZAMBIA'S ANNUAL TOTAL EXPORTS IN ABSOLUTE ZAMBIAN KWACHA AND U S DOLLAR 2000-2010

Flow Year	Total Exports	
	ZMK	USD
2000:	2,716,557,648,136	869,485,416
2001:	3,537,206,913,419	978,788,277
2002:	4,069,916,925,012	944,356,533
2003:	4,642,039,643,203	979,298,782
2004:	7,526,280,115,612	1,577,240,766
2005:	9,612,909,460,871	2,176,641,598
2006:	13,410,945,234,225	3,681,524,702
2007:	18,399,133,746,013	4,617,454,325
2008:	18,653,009,286,684	5,098,688,004
2009:	21,364,760,204,454	4,312,054,540
2010:	34,496,762,223,192	7,200,267,056
Total:	138,429,521,400,821	32,435,799,999

NOTE: 2000-2007 FIGURES ARE UNDER SPECIAL TRADE SYSTEM WHILE 2008 TO 2010 FIGURES ARE UNDER GENERAL TRADE SYSTEM

Source: CSO, International Trade Statistics, 2010

ZAMBIA'S ANNUAL IMPORTS IN ABSOLUTE ZAMBIAN KWACHA AND U S DOLLAR 2000-2010

Flow Year	IMPORT	
	ZMK	USD
2000:	2,751,563,199,592	871,386,492
2001:	3,900,496,869,495	1,079,955,769
2002:	4,732,881,915,324	1,103,070,912
2003:	7,439,867,256,553	1,573,309,968
2004:	10,279,302,826,391	2,150,649,040
2005:	11,466,668,652,907	2,579,688,391
2006:	11,049,770,813,126	3,023,996,472
2007:	15,945,289,847,742	4,006,980,387
2008:	18,476,489,239,723	5,060,482,666
2009:	18,941,137,478,672	3,792,642,675
2010:	25,507,270,190,029	5,320,961,454
Total:	130,490,738,289,554	30,563,124,226

NOTE: 2000-2007 FIGURES ARE UNDER SPECIAL TRADE SYSTEM WHILE 2008 TO 2010 FIGURES ARE UNDER GENERAL TRADE SYSTEM

Source: CSO, International Trade Statistics, 2010

LAY MAN and STATISTICS

1. Special Trade System

The special trade type records flows of goods as trade statistics only when they are cleared into or from the free circulation area.

2. General Trade System

The general trade type records flows of goods as trade statistics when they cross the boundary of the customs territory.

Surveys/Activities being undertaken

- ☞ 2010 Census of Population and Housing Data Processing
- ☞ 2010 Living Conditions Monitoring Survey VI Data Analysis and Report Writing
- ☞ 2011 Crop Forecasting Survey data analysis
- ☞ Sample Vital Registration with Verbal Autopsy (SAVVY)
- ☞ Formal Sector Quarterly Employment and Earnings Inquiry, 1st and 2nd Quarter 2010

Available

- ☞ 2009/2010 Crop Forecasting Survey
- ☞ 2009 Zambia Sexual Behaviour Survey (ZSBS)
- ☞ Employment and Earnings Inquiry Report, January 2006
- ☞ National Accounts Statistics Bulletin No.9 2005
- ☞ Labour-Force Survey Report, 2005
- ☞ 2007 Zambia Demographic and Health Survey (ZDHS)
- ☞ 2010 Census of population and Housing Preliminary Report (both Hard and soft copy)

Subscribe for your free electronic copy of “The Monthly” online at www.zamstats.gov.zm

The Editorial Team would like to thank all Media Institutions and Users of.....

“The Monthly Bulletin”

Thank you for supporting us

Secretariat

<i>John Kalumbi</i>	- <i>Acting Director</i>
<i>Peter Mukuka</i>	- <i>Deputy Director</i>
<i>Mate Mate</i>	- <i>Principal Research Officer</i>
<i>Linda N. Chonya</i>	- <i>Senior Research Officer</i>
<i>Etambuyu Lukonga</i>	- <i>Documentalist</i>
<i>Anthony Nkole</i>	- <i>Desktop Publishing Officer</i>
<i>Perry Musenge</i>	- <i>Assistant Desktop Publishing Officer</i>
<i>Petronella Kaputu</i>	- <i>Press Liaison Officer</i>
<i>Chisuwa S. Nalishuwa</i>	- <i>Assistant Field Co-ordinator</i>
<i>Cecilia M. Munjita</i>	- <i>Librarian</i>
<i>Humphrey Zimba</i>	- <i>Dissemination Officer</i>

Editorial Team

<i>John Kalumbi</i>	- <i>Acting Director</i>
<i>Peter Mukuka</i>	- <i>Deputy Director (IRD)</i>
<i>Modesto Banda</i>	- <i>Deputy Director (AG)</i>
<i>William Mayaka</i>	- <i>Deputy Director (SOC)</i>
<i>Goodson Sinyenga</i>	- <i>Deputy Director (ECON)</i>
<i>Shebo Nalishobo</i>	- <i>Statistician</i>
<i>Josephine C. Banda</i>	- <i>Statistician</i>
<i>Gerson Banda</i>	- <i>Statistician</i>
<i>Palver Sikanyiti</i>	- <i>Statistician</i>
<i>Lubinda Mukata</i>	- <i>Statistician</i>